

**Summary Billing Statement
AUGUST 2017**

Summary Account Number 13 011 504 01

Invoice number: 503100033325

13 011 504 01

TWP OF MONTCLAIR
MONTCLAIR TWP OF
50 S FULLERTON AVE
MONTCLAIR NJ 07042-2629

1 855-BIZ-PSEG (249-7734)
Emergencies 24 hours/7days
Business customer service
7 AM - 8 PM Mon - Fri
7 AM - 5 PM Sat

Visit our website
www.pseg.com

Inquiries by mail
PSE&G
PO Box 14444
New Brunswick NJ 08906-4444

Important Dates
Your payment is due
December 26, 2017

Account Summary for 19 Accounts

PSE&G balance from last bill	\$14,659.41
Current PSE&G - Gas	2,334.61
Current PSE&G - Electric	10,985.19
Current PSE&G - Unmetered Charges	1,213.22
Other PSE&G Charges and Credits	-14,659.41
DIRECT ENERGY BUSINESS, LLC Electric Charges	10,874.27
TriEagle Energy, LP Electric Charges	324.16
Total Amount Due On Dec 26, 2017	\$25,731.45

SUMMARY

1301150401 0025731459 00257314595



To help us make things work for you. Please return this portion with your payment. Make checks payable to PSE&G. Do not write on, staple, paper clip or tape payment to the coupon. Be sure payment address shows through window.

TWP OF MONTCLAIR
MONTCLAIR TWP OF
50 S FULLERTON AVE
MONTCLAIR NJ 07042-2629

13 011 504 01

Total Amount Due On Dec 26, 2017 **\$25,731.45**

PSE&G CO
PO BOX 14444
NEW BRUNSWICK NJ 08906-4444



\$

Amount enclosed

Electronic Check Conversion

When you pay by check, you authorize PSE&G to use your check to make a one-time electronic fund transfer from your account. If you do not wish to participate, call 1-800-436-PSEG.

Electric & Gas Rate Information

For news about PSE&G's rate filing and upcoming public hearings visit www.pseg.com/pseandgfilings

Customer Service Centers

Open Monday through Friday, during the hours noted.

Bayonne, 608 Broadway	8am to 4:00pm
Burlington, 501 High Street	8am to 4:00pm
Camden, 1 Port Center	8am to 4:00pm
Elizabeth, 550 N. Broad Street	8am to 4:00pm
Hackensack, 214 Hudson Street	8am to 4:00pm
Hoboken, 615 Washington Street	8am to 4:00pm
Jersey City, 35 Journal Square (Corner of Bergen Ave. & Newkirk St.)	8am to 4:00pm
Newark, 80 Park Plaza	8am to 4:00pm
New Brunswick, 317 George St.	8am to 4:00pm
West Orange, 59 Main St.	8am to 4:00pm
Passaic, 651 Main Ave	8am to 4:00pm
Paterson, 301 Main St (30 Clark St)	8am to 4:00pm
Perth Amboy, 286 State St.	8am to 4:00pm
Plainfield, 120 West Seventh Street	8am to 4:00pm
Trenton, 28 West State Street	8am to 4:00pm
Union City, 4808 Bergenline Avenue	8am to 4:00pm

Bill Form Definitions

Service Charge: A fixed monthly charge related to metering, billing and account maintenance.

Distribution Charges (Gas): Charges related to delivering gas through pipes from supply sources to the customer. These charges include a therm component, and in November through March on certain rate schedules, also include a demand component.

Bill Form Definitions (continued)

Balancing Charge (Gas): This charge reflects storage related costs associated with winter gas use. This charge is only applicable in the billing months of November through March.

Demand (Gas): The highest average daily use of gas over the most recent billing months of November to March.

Supply (Gas): Charges for customers who do not choose a competitive gas supplier are called Basic Gas Supply Service (BGSS). The charges include the cost of the natural gas as well as the cost of interstate delivery of the gas to New Jersey.

Distribution Charges (Electric): Charges related to delivering electricity through wires from supply sources to the customer. These charges include both kilowatthour (kWh) and demand (kW) components.

Measured Demand (Electric): The maximum use of electricity at any time during a month or monthly time period (on or off-peak).

Annual Demand (Electric):

(For Rate HTS): The highest Measured Demand over the most recent 12 months.

(For Rates MD, ED, LPLS, LPLP): The highest Measured Demand in any time period in the current month.

Summer Demand (Electric): The Measured Demand (excluding off-peak) in each billing month of June through September.

Societal Benefits: This charge recovers the cost of government mandated programs designed to achieve public policy goals, such as energy conservation.

Securitization Transition: This charge recovers costs and associated taxes for transition bonds and for BGS transition bonds collected by PSE&G as servicer on behalf of PSE&G Transition Funding LLC and PSE&G Transition Funding II LLC, respectively.

Supply Capacity (Electric): A customer's share of the generation and transmission facilities, measured in kilowatts (kW), which must be procured to serve the system annual peak usage. The customer's share is calculated from the customer's peak usage in the prior year's summer. For new customers without prior summer usage the share is calculated from connected load.

Supply (Electric): Charges for customers who do not choose a competitive electric supplier are called Basic Generation Service (BGS). The charges include the energy as well as the generation and transmission facilities necessary to produce and transmit the energy.

TDD number for the hearing impaired 1 800 225-0072

Location Summary

Name	Service at	Account number	Current charges	Account Balance
B O E MONTCLAIR	25 MAPLE AVE GLENFIELD MONTCLAIR TWP NJ	42 455 184 05	0.00	0.00
TWP OF MONTCLAIR	141 PARK ST HIGH SCH MONTCLAIR TWP NJ	42 456 005 00	3,013.67 ✓	5,665.68
MONTCLAIR BD OF ED	CHAMPLAIN TER O/B-FIELD MONTCLAIR TWP NJ	73 378 370 03	1.76 ✓	6.40
B O E MONTCLAIR	32 CEDAR AVE NISHUANE MONTCLAIR TWP NJ	73 378 371 00	585.69 ✓	1,185.18
B O E MONTCLAIR	20 EDMONT RD EDMONT MONTCLAIR TWP NJ	73 378 372 08	708.86 ✓	1,553.93
B O E MONTCLAIR	22 VALLEY RD BD OF ED MONTCLAIR TWP NJ	73 378 373 05	882.31	3,171.98
B O E MONTCLAIR	299 N FULLERTON AVE WATCHUNG MONTCLAIR TWP NJ	73 378 374 02	1,292.04	2,598.18
MONTCLAIR TWP OF	173 BELLEVUE AVE GAS ACCT MONTCLAIR TWP NJ	73 378 375 18	0.00	30.80
MONTCLAIR TWP OF	28 ESSEX AVE MONTCLAIR TWP NJ	73 378 376 07	1,365.78	2,605.09
B O E MONTCLAIR	603 GROVE ST N W ELEM MONTCLAIR TWP NJ	73 378 377 04	603.29	2,470.22
MONTCLAIR TWP OF	MIDLAND AVE MONTCLAIR TWP NJ	73 378 378 01	0.00	4.09
MONTCLAIR TWP OF	CHURCH ST & NW COR MONTCLAIR TWP NJ	73 378 379 09	2.43	12.59
TWP OF MONTCLAIR	141 PARK ST GAS ACCT MONTCLAIR TWP NJ	73 378 380 18	0.00	134.60
MONTCLAIR TWP OF	41 CHESTNUT ST ARENA MONTCLAIR TWP NJ	73 378 381 07	6.54	37.89
MONTCLAIR TWP OF	54 ORANGE RD MONTCLAIR TWP NJ	73 378 382 04	1,616.31	2,895.66
TWP OF MONTCLAIR	32 CEDAR AVE MONTCLAIR TWP NJ	73 378 383 01	-83.15	109.36
B O E MONTCLAIR	176 N FULLERTON AVE RENA MID MONTCLAIR TWP NJ	73 378 384 09	752.35 ✓	1,722.58
B O E MONTCLAIR	VARIOUS LOCATIONS LTG MONTCLAIR TWP NJ	73 378 385 06	318.61	1,497.51
MONTCLAIR TWP OF	176 N FULLERTON AVE MONTCLAIR TWP NJ	73 378 386 03	5.55	29.71
Total Amount For 19 Accounts			\$11,072.04	\$25,731.45

25 MAPLE AVE GLENFIELD
 MONTCLAIR TWP NJ

Account number for this location 42 455 184 05

Account Summary for this location

Your next meter reading is
 scheduled for January 17

Meter reading scheduling
 1 800 436-PSEG(7734)

Current Charges	0.00
Total Amount Due	\$0.00

141 PARK ST HIGH SCH
 MONTCLAIR TWP NJ

Account number for this location 42 456 005 00

Your next meter reading is
 scheduled for January 16
 Meter reading scheduling
 1 800 436-PSEG(7734)

Account Summary for this location

PSE&G balance from last bill	\$2,652.01
Current Charges	3,013.67
Total Amount Due	\$5,665.68

PSE&G Electric

Account number for this location 42 456 005 00

Usage	Meter	9213519
Reading Aug 14		
On-Peak actual	6284	
Off-Peak1		
Off-Peak2		
Reading Jul 15		
On-Peak actual	6104	
Off-Peak1		
Off-Peak2		
Multiplier	200	
Total On kWh	18,421	
Total Off kWh	17,546	
Total kWh	35,967	
Distribution Demands		
Annual Demand kW	148.30	
Summer Demand kW	148.30	
Measured Demands		
On-Peak kW	148.30	
Off-Peak2 kW	113.00	
Constant	200	
Supply Capacity		
Generation kW	92.12	
Transmission kW	65.96	

Charges	PoD ID: PE000008948130338751	Rate - LPLS
Delivery		
Service charge		\$384.07
Distribution charges		
Annual Demand	148.30 kW @ \$3.892582603	577.27
Summer Demand	148.30 kW @ \$9.260552933	1,373.34
kWh - On-peak	18421 kWh @ \$0.000953803	17.57
kWh - Off-peak	17546 kWh @ \$0.000954064	16.74
Societal Benefits	35967 kWh @ \$0.007868880	283.02
Sub-Total Delivery		\$2,652.01

Total electric charges \$2,652.01

**You are currently purchasing your electric supply from another supplier. If you had been purchasing your electric supply from PSE&G, you would have been billed \$3,261.99 for this supply. This is your Price to Compare, which varies each month depending upon your usage pattern.*

Other Charges And Credits

Account number for this location 42 456 005 00

Elec Billing From Aug 14, 2017	Oct 11, 2017	\$-2,652.01
Cancelled		
Total other charges and credits		\$2,652.01 CR

DIRECT ENERGY BUSINESS, LLC

Account number for this location 42 456 005 00

Through the CHOICE Program, you have chosen to purchase electricity from DIRECT ENERGY BUSINESS, LLC. If you have any questions, please contact them directly at 888-925-9115.

Adjustments	0.00
Current charges	3,013.67
Total DIRECT ENERGY BUSINESS, LLC Charges	\$3,013.67

Fixed Price - 35,966.97 Kwh Total @ \$0.08379/Kwh

**CHAMPLAIN TER O/B-FIELD
 MONTCLAIR TWP NJ**

Account number for this location 73 378 370 03

Your next meter reading is
 scheduled for January 10

Meter reading scheduling
 1 800 436-PSEG(7734)

Account Summary for this location

Current Charges	1.76 ✓
Total Amount Due	\$1.76

PSE&G Electric

Account number for this location 73 378 370 03

Usage	Meter 626051179	Charges	PoD ID: PE000008184629762503	Rate - GLP
Estimated reading Aug 10	1020	Delivery		
Actual reading Jul 12	999	Service charge		\$4.23
Total kWh	21	Distribution charges		
		kWh charges	21 kWh @ \$0.011428571	0.24
Supply Capacity		Societal Benefits	21 kWh @ \$0.008095238	0.17
Generation kW	0.06	Sub-Total Delivery		\$4.64
Transmission kW	0.05	Total electric charges		\$4.64

**You are currently purchasing your electric supply from another supplier. If you had been purchasing your electric supply from PSE&G, you would have been billed \$2.10 for this supply. This is your Price to Compare, which varies each month depending upon your usage pattern.*

Other Charges And Credits

Account number for this location 73 378 370 03

Elec Billing From Aug 10, 2017	Oct 11, 2017	\$-4.64
Cancelled		
Total other charges and credits		\$4.64 CR

DIRECT ENERGY BUSINESS, LLC

Account number for this location 73 378 370 03

Through the CHOICE Program, you have chosen to purchase electricity from DIRECT ENERGY BUSINESS, LLC. If you have any questions, please contact them directly at 888-925-9115.

Adjustments	0.00
Current charges	1.76
Total DIRECT ENERGY BUSINESS, LLC Charges	\$1.76

Fixed Price - 21 Kwh Total @ \$0.08379/Kwh

**32 CEDAR AVE NISHUANE
 MONTCLAIR TWP NJ**

Account number for this location 73 378 371 00

Your next meter reading is
 scheduled for January 17

 Meter reading scheduling
 1 800 436-PSEG(7734)

Account Summary for this location

PSE&G balance from last bill	\$599.49
Current Charges	585.69 ✓
Total Amount Due	\$1,185.18

PSE&G Electric

Account number for this location 73 378 371 00

Usage	Meter 59581092
Estimated reading Aug 15	6874
Actual reading Jul 18	6641
Difference	233
Meter multiplier	30
Total kWh	6990
Distribution Demands	
Annual Demand kW	36.90
Summer Demand kW	36.90
Measured Demands	
Demand kW	36.90
Constant	30
Supply Capacity	
Generation kW	77.72
Transmission kW	67.96

Charges	PoD ID: PE000009434847145191	Rate - GLP
Delivery		
Service charge		\$4.09
Distribution charges		
Annual Demand	36.90 kW @ \$4.361788618	160.95
Summer Demand	36.90 kW @ \$8.094850949	298.70
kWh charges	6990 kWh @ \$0.011552217	80.75
Societal Benefits	6990 kWh @ \$0.007868383	55.00
Sub-Total Delivery		\$599.49
Total electric charges		\$599.49

**You are currently purchasing your electric supply from another supplier. If you had been purchasing your electric supply from PSE&G, you would have been billed \$1,439.43 for this supply. This is your Price to Compare, which varies each month depending upon your usage pattern.*

Other Charges And Credits

Account number for this location 73 378 371 00

Elec Billing From Aug 15, 2017	Oct 11, 2017	\$-599.49
Cancelled		
Total other charges and credits		\$599.49 CR

DIRECT ENERGY BUSINESS, LLC

Account number for this location 73 378 371 00

Through the CHOICE Program, you have chosen to purchase electricity from DIRECT ENERGY BUSINESS, LLC. If you have any questions, please contact them directly at 888-925-9115.

Adjustments	0.00
Current charges	585.69
Total DIRECT ENERGY BUSINESS, LLC Charges	\$585.69

Fixed Price - 6,990 Kwh Total @ \$0.08379/Kwh

**20 EDMONT RD EDMONT
 MONTCLAIR TWP NJ**

Account number for this location 73 378 372 08

Your next meter reading is
 scheduled for January 17

Meter reading scheduling
 1 800 436-PSEG(7734)

Account Summary for this location

PSE&G balance from last bill	\$845.07
Current Charges	708.86 ✓
Total Amount Due	\$1,553.93

PSE&G Gas

Account number for this location 73 378 372 08

Usage	Meter 2209380
Actual reading Aug 15	58058
Estimated reading Jul 18	57891
Difference	167
Conversion to CCF	x 1.0120
CCF total	169.004
Conversion to therms	x 1.03200
Total therms	174.412

Charges	PoD ID: PG000011140101445191	Rate - LVG
Delivery		
Service charge		\$103.43
Distribution charge	174.412 therms @ \$0.0471871	8.23
Societal Benefits	174.412 therms @ \$0.04707240	8.21
Total Delivery		\$119.87
Total gas charges		\$119.87

A history of PSE&G's monthly Basic Gas Supply Service (BGSS) prices are located on our website at www.pseg.com.

Gas Deliveries	
Bill period deliveries	86.043
Imbalance*	88.369 +

** The imbalance of 88.369+ will be applied to your Gas Deliveries in the month of October. The amount and month applied may differ if you are switching third party suppliers or your account requires an adjustment.*

*See text

PSE&G Electric

Account number for this location 73 378 372 08

Usage	Meter 1205063
Actual reading Aug 15	7920
Actual reading Jul 18	7638
Difference	282
Meter multiplier	30
Total kWh	8460

Charges	PoD ID: PE000011140102245191	Rate - GLP
Delivery		
Service charge		\$4.09
Distribution charges		
Annual Demand	44.70 kW @ \$4.361744966	194.97
Summer Demand	44.70 kW @ \$8.094854586	361.84
kWh charges	8460 kWh @ \$0.011552009	97.73

PSE&G Electric (continued)

Account number for this location 73 378 372 08

Distribution Demands		Societal Benefits	8460 kWh @ \$0.007868794	66.57
Annual Demand kW	44.70	Sub-Total Delivery		\$725.20
Summer Demand kW	44.70	Total electric charges		\$725.20
Measured Demands		<i>*You are currently purchasing your electric supply from another supplier. If you had been purchasing your electric supply from PSE&G, you would have been billed \$1,004.21 for this supply. This is your Price to Compare, which varies each month depending upon your usage pattern.</i>		
Demand kW	44.70			
Constant	30			
Supply Capacity				
Generation kW	38.22			
Transmission kW	33.42			

Other Charges And Credits

Account number for this location 73 378 372 08

Elec Billing From Aug 15, 2017	Oct 11, 2017	\$-725.20
Cancelled		
Gas Billing From Aug 15, 2017	Oct 11, 2017	-119.87
Cancelled		
Total other charges and credits		\$845.07 CR

DIRECT ENERGY BUSINESS, LLC

Account number for this location 73 378 372 08

Through the CHOICE Program, you have chosen to purchase electricity from DIRECT ENERGY BUSINESS, LLC. If you have any questions, please contact them directly at 888-925-9115.

Adjustments	0.00
Current charges	708.86
Total DIRECT ENERGY BUSINESS, LLC Charges	\$708.86

Fixed Price - 8,460 Kwh Total @ \$0.08379/Kwh

22 VALLEY RD BD OF ED
 MONTCLAIR TWP NJ

Account number for this location 73 378 373 05

Your next meter reading is
 scheduled for January 12
 Meter reading scheduling
 1 800 436-PSEG(7734)

Account Summary for this location

PSE&G balance from last bill	\$2,289.67
Current Charges	882.31 ✓
Total Amount Due	\$3,171.98

PSE&G Gas

Account number for this location 73 378 373 05

Usage	Meter 4223501
Actual reading Aug 11	222
Actual reading Jul 14	192
Difference	30
Conversion to CCF	x 1.0120
CCF total	30.360
Conversion to therms	x 1.03200
Total therms	31.332

Gas Deliveries	
Bill period deliveries	40.226
Imbalance*	8.894 -

*See text

Charges	PoD ID: PG000009908906245191	Rate - GSG
Delivery		
Service charge		\$11.98
Distribution charge	31.332 therms @ \$0.2690540	8.43
Societal Benefits	31.332 therms @ \$0.04691690	1.47
Total Delivery		\$21.88
Total gas charges		\$21.88

A history of PSE&G's monthly Basic Gas Supply Service (BGSS) prices are located on our website at www.pseg.com.

* The Imbalance of 8.894- will be applied to your Gas Deliveries in the month of October. The amount and month applied may differ if you are switching third party suppliers or your account requires an adjustment.

Usage	Meter 3637119
Estimated reading Aug 14	362258
Actual reading Jul 14	360207
Difference	2051
Conversion to CCF	x 1.0120
CCF total	2075.612
Conversion to therms	x 1.03200
Total therms	2142.032

Supply*	
BGSS Commodity	2142.032 therms @ \$0.53874078
Total Supply	\$1,154.00

Charges	PoD ID: PG000011965185945191	Rate - LVG
Delivery		
Service charge		\$114.13
Distribution charge		
First	1067.000 therms @ \$0.0471884	50.35
Next	1075.032 therms @ \$0.0425383	45.73
Societal Benefits	2142.032 therms @ \$0.04704410	100.77
Total Delivery		\$310.98
Total gas charges		\$1,464.98

A history of PSE&G's monthly Basic Gas Supply Service (BGSS) prices are located on our website at www.pseg.com.

PSE&G Electric

Account number for this location 73 378 373 05

Usage	Meter 678000415
Estimated reading Aug 14	93857
Actual reading Jul 14	93506
Difference	351
Meter multiplier	30
Total kWh	10530
Distribution Demands	
Annual Demand kW	43.20
Summer Demand kW	43.20
Measured Demands	
Demand kW	43.20

Charges	PoD ID: PE000009908907045191	Rate - GLP
Delivery		
Service charge		\$4.51
Distribution charges		
Annual Demand	43.20 kW @ \$4.812962963	207.92
Summer Demand	43.20 kW @ \$8.932407407	385.88
kWh charges	10530 kWh @ \$0.011551757	121.64
Societal Benefits	10530 kWh @ \$0.007868946	82.86
Sub-Total Delivery		\$802.81
Total electric charges		\$802.81

PSE&G Electric (continued)

Account number for this location 73 378 373 05

Constant	30
Supply Capacity	
Generation kW	43.42
Transmission kW	37.96

**You are currently purchasing your electric supply from another supplier. If you had been purchasing your electric supply from PSE&G, you would have been billed \$1,260.47 for this supply. This is your Price to Compare, which varies each month depending upon your usage pattern.*

Other Charges And Credits

Account number for this location 73 378 373 05

Elec Billing From Aug 14, 2017 Cancelled	Oct 11, 2017	\$-802.81
Gas Billing From Aug 14, 2017 Cancelled	Oct 11, 2017	-1,486.86
Total other charges and credits		\$2,289.67 CR

DIRECT ENERGY BUSINESS, LLC

Account number for this location 73 378 373 05

Through the CHOICE Program, you have chosen to purchase electricity from DIRECT ENERGY BUSINESS, LLC. If you have any questions, please contact them directly at 888-925-9115.

Adjustments	0.00
Current charges	882.31
Total DIRECT ENERGY BUSINESS, LLC Charges	\$882.31

Fixed Price - 10,530 Kwh Total @ \$0.08379/Kwh

299 N FULLERTON AVE
 WATCHUNG
 MONTCLAIR TWP NJ

Account number for this location 73 378 374 02

Your next meter reading is
 scheduled for January 17

Meter reading scheduling
 1 800 436-PSEG(7734)

Account Summary for this location

PSE&G balance from last bill	\$1,306.14
Current Charges	1,292.04 ✓
Total Amount Due	\$2,598.18

PSE&G Gas

Account number for this location 73 378 374 02

Usage	Meter 3010325	Charges	PoD ID: PG000008219967045191	Rate - LVG
Actual reading Aug 15	32095	Delivery		
Actual reading Jul 18	32072	Service charge		\$103.43
Difference	23	Distribution charge	24.021 therms @ \$0.0470422	1.13
Conversion to CCF	x 1.0120	Societal Benefits	24.021 therms @ \$0.04704220	1.13
CCF total	23.276	Total Delivery		\$105.69
Conversion to therms	x 1.03200	Total gas charges		\$105.69
Total therms	24.021	<i>A history of PSE&G's monthly Basic Gas Supply Service (BGSS) prices are located on our website at www.pseg.com.</i>		
Gas Deliveries		<i>* The Imbalance of 9.686- will be applied to your Gas Deliveries in the month of October. The amount and month applied may differ if you are switching third party suppliers or your account requires an adjustment.</i>		
Bill period deliveries	33.707			
Imbalance*	9.686 -			

*See text

PSE&G Electric

Account number for this location 73 378 374 02

Usage	Meter 52895559	Charges	PoD ID: PE000008219968845191	Rate - GLP
Actual reading Aug 15	7491	Delivery		
Actual reading Jul 18	6977	Service charge		\$4.09
Difference	514	Distribution charges		
Meter multiplier	30	Annual Demand	72.00 kW @ \$4.361805556	314.05
Total kWh	15420	Summer Demand	72.00 kW @ \$8.095000000	582.84
Distribution Demands		kWh charges	15420 kWh @ \$0.011551881	178.13
Annual Demand kW	72.00	Societal Benefits	15420 kWh @ \$0.007869001	121.34
Summer Demand kW	72.00	Sub-Total Delivery		\$1,200.45
Measured Demands		Total electric charges		\$1,200.45
Demand kW	72.00	<i>*You are currently purchasing your electric supply from another supplier. If you had been purchasing your electric supply from PSE&G, you would have been billed \$1,868.21 for this supply. This is your Price to Compare, which varies each month depending upon your usage pattern.</i>		
Constant	30			
Supply Capacity				
Generation kW	72.52			
Transmission kW	63.42			

Other Charges And Credits

Account number for this location 73 378 374 02

Elec Billing From Aug 15, 2017	Oct 11, 2017	\$-1,200.45
Cancelled		
Gas Billing From Aug 15, 2017	Oct 11, 2017	-105.69
Cancelled		
Total other charges and credits		\$1,306.14 CR

DIRECT ENERGY BUSINESS, LLC

Account number for this location 73 378 374 02

Through the CHOICE Program, you have chosen to purchase electricity from DIRECT ENERGY BUSINESS, LLC. If you have any questions, please contact them directly at 888-925-9115.

Adjustments	0.00
Current charges	1,292.04 ✓
Total DIRECT ENERGY BUSINESS, LLC Charges	\$1,292.04

Fixed Price - 15,420 Kwh Total @ \$0.08379/Kwh

**173 BELLEVUE AVE GAS ACCT
 MONTCLAIR TWP NJ**

Account number for this location 73 378 375 18

Your next meter reading is
 scheduled for January 17

Meter reading scheduling
 1 800 436-PSEG(7734)

Account Summary for this location

PSE&G balance from last bill	\$30.80 CR
Current Charges	0.00 ✓
Credit balance	\$30.80 CR

PSE&G Gas

Account number for this location 73 378 375 18

Usage	Meter 2414297	Charges	PoD ID: PG000008219969680717	Rate - GSG (HTG)
Actual reading Aug 15	71027	Delivery		
Actual reading Jul 18	70970	Service charge		\$11.98
Difference	57	Distribution charge	59.530 therms @ \$0.2691080	16.02
Conversion to CCF	x 1.0120	Societal Benefits	59.530 therms @ \$0.04703510	2.80
CCF total	57.684	Total Delivery		\$30.80
Conversion to therms	x 1.03200	Total gas charges		\$30.80
Total therms	59.530			

A history of PSE&G's monthly Basic Gas Supply Service (BGSS) prices are located on our website at www.pseg.com.

Gas Deliveries	
Bill period deliveries	233.050
Imbalance*	173.520 -

** The Imbalance of 173.520- will be applied to your Gas Deliveries in the month of October. The amount and month applied may differ if you are switching third party suppliers or your account requires an adjustment.*

*See text

Other Charges And Credits

Account number for this location 73 378 375 18

Gas Billing From Aug 15, 2017	Oct 11, 2017	\$-30.80
Cancelled		
Total other charges and credits		\$30.80 CR

28 ESSEX AVE
 MONTCLAIR TWP NJ

Account number for this location 73 378 376 07

Your next meter reading is
 scheduled for January 17
 Meter reading scheduling
 1 800 436-PSEG(7734)

Account Summary for this location

PSE&G balance from last bill	\$1,239.31
Current Charges	1,365.78
Total Amount Due	\$2,605.09

PSE&G Gas

Account number for this location 73 378 376 07

Usage	Meter 3165741
Actual reading Aug 15	27471
Actual reading Jul 18	27431
Difference	40
Conversion to CCF	x 1.0120
CCF total	40.480
Conversion to therms	x 1.03200
Total therms	41.775

Charges	PoD ID: PG000007977730678939	Rate - LVG
Delivery		
Service charge		\$103.43
Distribution charge	41.775 therms @ \$0.0471574	1.97
Societal Benefits	41.775 therms @ \$0.04715740	1.97
Total Delivery		\$107.37
Total gas charges		\$107.37

Gas Deliveries	
Bill period deliveries	58.667
Imbalance*	16.892 -

A history of PSE&G's monthly Basic Gas Supply Service (BGSS) prices are located on our website at www.pseg.com.

* The Imbalance of 16.892- will be applied to your Gas Deliveries in the month of October. The amount and month applied may differ if you are switching third party suppliers or your account requires an adjustment.

*See text

PSE&G Electric

Account number for this location 73 378 376 07

Usage	Meter 9195583
Estimated reading Aug 15	11873
Actual reading Jul 18	11744
Difference	129
Meter multiplier	120
Total kWh	15480
Distribution Demands	
Annual Demand kW	56.40
Summer Demand kW	56.40
Measured Demands	
Demand kW	56.40
Constant	120
Supply Capacity	
Generation kW	50.93
Transmission kW	44.54

Charges	PoD ID: PE000007977731478939	Rate - GLP
Delivery		
Service charge		\$4.09
Distribution charges		
Annual Demand	56.40 kW @ \$4.361879433	246.01
Summer Demand	56.40 kW @ \$8.095035461	456.56
kWh charges	15480 kWh @ \$0.011551680	178.82
Societal Benefits	15480 kWh @ \$0.007868863	121.81
Sub-Total Delivery		\$1,007.29
Total electric charges		\$1,007.29

*You are currently purchasing your electric supply from another supplier. If you had been purchasing your electric supply from PSE&G, you would have been billed \$1,586.21 for this supply. This is your Price to Compare, which varies each month depending upon your usage pattern.

PSE&G Electric

Account number for this location 73 378 376 07

Usage	Meter 638000167
Actual reading Aug 15	32735
Actual reading Jul 18	32694
Difference	41
Meter multiplier	20
Total kWh	820
Distribution Demands	
Annual Demand kW	8.40
Summer Demand kW	8.40
Measured Demands	
Demand kW	8.40
Constant	20
Supply Capacity	
Generation kW	7.34
Transmission kW	6.42

Charges	PoD ID: PE000007977732278939	Rate - GLP
Delivery		
Service charge		\$4.09
Distribution charges		
Annual Demand	8.40 kW @ \$4.361904762	36.64
Summer Demand	8.40 kW @ \$8.095238095	68.00
kWh charges	820 kWh @ \$0.011548780	9.47
Societal Benefits	820 kWh @ \$0.007865854	6.45
Sub-Total Delivery		\$124.65
Total electric charges		\$124.65

**You are currently purchasing your electric supply from another supplier. If you had been purchasing your electric supply from PSE&G, you would have been billed \$145.23 for this supply. This is your Price to Compare, which varies each month depending upon your usage pattern.*

Other Charges And Credits

Account number for this location 73 378 376 07

Elec Billing From Aug 15, 2017	Oct 11, 2017	\$-1,131.94
Cancelled		
Gas Billing From Aug 15, 2017	Oct 11, 2017	-107.37
Cancelled		
Total other charges and credits		\$1,239.31 CR

DIRECT ENERGY BUSINESS, LLC

Account number for this location 73 378 376 07

Through the CHOICE Program, you have chosen to purchase electricity from DIRECT ENERGY BUSINESS, LLC. If you have any questions, please contact them directly at 888-925-9115.

Adjustments	0.00
Current charges	1,365.78
Total DIRECT ENERGY BUSINESS, LLC Charges	\$1,365.78

Fixed Price - 820 Kwh Total @ \$0.08379/Kwh
 Fixed Price - 15,480 Kwh Total @ \$0.08379/Kwh

603 GROVE ST N W ELEM
 MONTCLAIR TWP NJ

Account number for this location 73 378 377 04

Your next meter reading is
 scheduled for January 17

Meter reading scheduling
 1 800 436-PSEG(7734)

Account Summary for this location

PSE&G balance from last bill	\$1,866.93
Current Charges	603.29
Total Amount Due	\$2,470.22

PSE&G Gas

Account number for this location 73 378 377 04

Usage	Meter 2209360
Actual reading Aug 15	76113
Estimated reading Jul 18	75987
Difference	126
Conversion to CCF	x 1.0339
CCF total	130.271
Conversion to therms	x 1.03200
Total therms	134.440

Charges	PoD ID: PG000008704508445191	Rate - LVG
Delivery		
Service charge		\$103.43
Distribution charge	134.440 therms @ \$0.0471586	6.34
Societal Benefits	134.440 therms @ \$0.04700980	6.32
Total Delivery		\$116.09
Total gas charges		\$116.09

Gas Deliveries	
Bill period deliveries	54.286
Imbalance*	80.154 +

A history of PSE&G's monthly Basic Gas Supply Service (BGSS) prices are located on our website at www.pseg.com.

* The Imbalance of 80.154+ will be applied to your Gas Deliveries in the month of October. The amount and month applied may differ if you are switching third party suppliers or your account requires an adjustment.

*See text

PSE&G Electric

Account number for this location 73 378 377 04

Usage	Meter 678001516
Actual reading Aug 15	35174
Actual reading Jul 18	35078
Difference	96
Meter multiplier	75
Total kWh	7200
Distribution Demands	
Annual Demand kW	129.00
Summer Demand kW	129.00
Measured Demands	
Demand kW	129.00
Constant	75
Supply Capacity	
Generation kW	105.02
Transmission kW	91.84

Charges	PoD ID: PE000008704509245191	Rate - GLP
Delivery		
Service charge		\$4.09
Distribution charges		
Annual Demand	129.00 kW @ \$4.361782946	562.67
Summer Demand	129.00 kW @ \$8.094961240	1,044.25
kWh charges	7200 kWh @ \$0.011551389	83.17
Societal Benefits	7200 kWh @ \$0.007869444	56.66
Sub-Total Delivery		\$1,750.84
Total electric charges		\$1,750.84

*You are currently purchasing your electric supply from another supplier. If you had been purchasing your electric supply from PSE&G, you would have been billed \$1,812.61 for this supply. This is your Price to Compare, which varies each month depending upon your usage pattern.

Other Charges And Credits

Account number for this location 73 378 377 04

Elec Billing From Aug 15, 2017 Cancelled	Oct 11, 2017	\$-1,750.84
Gas Billing From Aug 15, 2017 Cancelled	Oct 11, 2017	-116.09
Total other charges and credits		\$1,866.93 CR

DIRECT ENERGY BUSINESS, LLC

Account number for this location 73 378 377 04

Through the CHOICE Program, you have chosen to purchase electricity from DIRECT ENERGY BUSINESS, LLC. If you have any questions, please contact them directly at 888-925-9115.

Adjustments	0.00
Current charges	603.29
Total DIRECT ENERGY BUSINESS, LLC Charges	\$603.29

Fixed Price - 7,200 Kwh Total @ \$0.08379/Kwh

**MIDLAND AVE
 MONTCLAIR TWP NJ**

Account number for this location 73 378 378 01

Your next meter reading is scheduled for January 17

Meter reading scheduling
 1 800 436-PSEG(7734)

Account Summary for this location

PSE&G balance from last bill	\$4.09
Current Charges	0.00
Total Amount Due	\$4.09

PSE&G Electric

Account number for this location 73 378 378 01

Usage	Meter 134019815
Actual reading Aug 15	34258
Actual reading Jul 18	34258
Total kWh	0

Charges	PoD ID: PE000011384048278916	Rate - GLP
Delivery		
Service charge		\$4.09
Sub-Total Delivery		\$4.09

Supply Capacity	
Generation kW	0.00
Transmission kW	0.00

Total electric charges \$4.09

**You are currently purchasing your electric supply from another supplier. If you had been purchasing your electric supply from PSE&G, you would have been billed \$0.02 for this supply. This is your Price to Compare, which varies each month depending upon your usage pattern.*

Other Charges And Credits

Account number for this location 73 378 378 01

Elec Billing From Aug 15, 2017 Cancelled	Oct 11, 2017	\$-4.09
Total other charges and credits		\$4.09 CR

DIRECT ENERGY BUSINESS, LLC

Account number for this location 73 378 378 01

Through the CHOICE Program, you have chosen to purchase electricity from DIRECT ENERGY BUSINESS, LLC. If you have any questions, please contact them directly at 888-925-9115.

Adjustments	0.00
Current charges	0.00
Total DIRECT ENERGY BUSINESS, LLC Charges	\$0.00

Fixed Price - 0 Kwh Total @ \$0.08379/Kwh

**CHURCH ST & NW COR
 MONTCLAIR TWP NJ**

Account number for this location 73 378 379 09

Your next meter reading is
 scheduled for January 03

Meter reading scheduling
 1 800 436-PSEG(7734)

Account Summary for this location

PSE&G balance from last bill	\$10.16
Current Charges	2.43
Total Amount Due	\$12.59

Unmetered Electric Service

Account number for this location 73 378 379 09

PoD ID: PE000011818803678780

Service from 8/3/2017
 to 8/31/2017

Usage	29.0
Distribution Demands	
Annual Demand kW	0.30
Summer Demand kW	0.30
Supply Capacity	
Generation kW	0.29
Transmission kW	0.25

Charges		Rate - GLP
Delivery		
Fixed services		\$1.89
Distribution charges		
Annual Demand	0.30 kW @ \$4.366666700	1.31
Summer Demand	0.30 kW @ \$8.100000000	2.43
kWh charges	29 kWh @ \$0.011552000	0.34
Societal Benefits	29 kWh @ \$0.007931000	0.23
Facilities charge		3.96
Sub-Total Delivery		\$10.16
Unmetered charges		\$10.16

**The total supply amount (\$5.42) is your Price to Compare for this month should you consider another electric supplier for these services. Your Price to Compare varies each month depending upon your usage pattern.*

Other Charges And Credits

Account number for this location 73 378 379 09

Elec Billing From Aug 31, 2017	Oct 11, 2017	\$-10.16
Cancelled		
Total other charges and credits		\$10.16 CR

DIRECT ENERGY BUSINESS, LLC

Account number for this location 73 378 379 09

Through the CHOICE Program, you have chosen to purchase electricity from DIRECT ENERGY BUSINESS, LLC. If you have any questions, please contact them directly at 888-925-9115.

Adjustments	0.00
Current charges	2.43
Total DIRECT ENERGY BUSINESS, LLC Charges	\$2.43

Fixed Price - 29 Kwh Total @ \$0.08379/Kwh

**141 PARK ST GAS ACCT
 MONTCLAIR TWP NJ**

Account number for this location 73 378 380 18

Your next meter reading is scheduled for January 17

Meter reading scheduling
 1 800 436-PSEG(7734)

Account Summary for this location

PSE&G balance from last bill	\$134.60 CR
Current Charges	0.00
Credit balance	\$134.60 CR

PSE&G Gas

Account number for this location 73 378 380 18

Usage	Meter 3637994
Actual reading Aug 15	290060
Actual reading Jul 18	289750
Difference	310
Conversion to CCF	x 1.0339
CCF total	320.509
Conversion to therms	x 1.03200
Total therms	330.765

Gas Deliveries	
Bill period deliveries	438.606
Imbalance*	107.841 -

Charges	PoD ID: PG000010163338638751	Rate - LVG
Delivery		
Service charge		\$103.43
Distribution charge	330.765 therms @ \$0.0471936	15.61
Societal Benefits	330.765 therms @ \$0.04704250	15.56
Total Delivery		\$134.60
Total gas charges		\$134.60

A history of PSE&G's monthly Basic Gas Supply Service (BGSS) prices are located on our website at www.pseg.com.

** The Imbalance of 107.841- will be applied to your Gas Deliveries in the month of October. The amount and month applied may differ if you are switching third party suppliers or your account requires an adjustment.*

*See text

Other Charges And Credits

Account number for this location 73 378 380 18

Gas Billing From Aug 15, 2017	Oct 11, 2017	\$-134.60
Cancelled		
Total other charges and credits		\$134.60 CR

41 CHESTNUT ST ARENA
 MONTCLAIR TWP NJ

Account number for this location 73 378 381 07

Your next meter reading is
 scheduled for January 17

Meter reading scheduling
 1 800 436-PSEG(7734)

Account Summary for this location

PSE&G balance from last bill	\$31.35
Current Charges	6.54
Total Amount Due	\$37.89

PSE&G Gas

Account number for this location 73 378 381 07

Usage	Meter 2359827	Charges	PoD ID: PG000010164338577005	Rate - GSG (HTG)
Actual reading Aug 15	926	Delivery		
Actual reading Jul 18	922	Service charge		\$11.98
Difference	4	Distribution charge	4.178 therms @ \$0.2680708	1.12
Conversion to CCF	x 1.0120	Societal Benefits	4.178 therms @ \$0.04786980	0.20
CCF total	4.048	Total Delivery		\$13.30
Conversion to therms	x 1.03210	Total gas charges		\$13.30
Total therms	4.178	<i>A history of PSE&G's monthly Basic Gas Supply Service (BGSS) prices are located on our website at www.pseg.com.</i>		
Gas Deliveries		<i>* The Imbalance of 3.796- will be applied to your Gas Deliveries in the month of October.</i>		
Bill period deliveries	7.974	<i>The amount and month applied may differ if you are switching third party suppliers or your account requires an adjustment.</i>		
Imbalance*	3.796 -			

*See text

PSE&G Electric

Account number for this location 73 378 381 07

Usage	Meter 626051212	Charges	PoD ID: PE000010164339377005	Rate - GLP
Actual reading Aug 15	46146	Delivery		
Actual reading Jul 18	46068	Service charge		\$4.09
Total kWh	78	Distribution charges		
Distribution Demands		Annual Demand	1.00 kW @ \$4.360000000	4.36
Annual Demand kW	1.00	Summer Demand	1.00 kW @ \$8.090000000	8.09
Summer Demand kW	1.00	kWh charges	78 kWh @ \$0.011538462	0.90
Supply Capacity		Societal Benefits	78 kWh @ \$0.007820513	0.61
Generation kW	0.77	Sub-Total Delivery		\$18.05
Transmission kW	0.67	Total electric charges		\$18.05

**You are currently purchasing your electric supply from another supplier. If you had been purchasing your electric supply from PSE&G, you would have been billed \$14.76 for this supply. This is your Price to Compare, which varies each month depending upon your usage pattern.*

Other Charges And Credits

Account number for this location 73 378 381 07

Elec Billing From Aug 15, 2017 Cancelled	Oct 11, 2017	\$-18.05
Gas Billing From Aug 15, 2017 Cancelled	Oct 11, 2017	-13.30
Total other charges and credits		\$31.35 CR

DIRECT ENERGY BUSINESS, LLC

Account number for this location 73 378 381 07

Through the CHOICE Program, you have chosen to purchase electricity from DIRECT ENERGY BUSINESS, LLC. If you have any questions, please contact them directly at 888-925-9115.

Adjustments	0.00
Current charges	6.54
Total DIRECT ENERGY BUSINESS, LLC Charges	\$6.54

Fixed Price - 78 Kwh Total @ \$0.08379/Kwh

54 ORANGE RD
 MONTCLAIR TWP NJ

Account number for this location 73 378 382 04

Your next meter reading is
 scheduled for January 17

Meter reading scheduling
 1 800 436-PSEG(7734)

Account Summary for this location

PSE&G balance from last bill	\$2,895.66 CR
Current Charges	1,616.31
Credit balance	\$1,279.35 CR

PSE&G Electric

Account number for this location 73 378 382 04

Usage	Meter 278003480
Actual reading Aug 15	6199
Actual reading Jul 18	5556
Difference	643
Meter multiplier	30
Total kWh	19290
Distribution Demands	
Annual Demand kW	72.30
Summer Demand kW	72.30
Measured Demands	
Demand kW	72.30
Constant	30
Supply Capacity	
Generation kW	72.47

Charges	PoD ID: PE000009434846378760	Rate - GLP
Delivery		
Service charge		\$4.09
Distribution charges		
Annual Demand	72.30 kW @ \$4.361825726	315.36
Summer Demand	72.30 kW @ \$8.095020747	585.27
kWh charges	19290 kWh @ \$0.011552100	222.84
Societal Benefits	19290 kWh @ \$0.007868844	151.79
Sub-Total Delivery		\$1,279.35
Total electric charges		\$1,279.35

**You are currently purchasing your electric supply from another supplier. If you had been purchasing your electric supply from PSE&G, you would have been billed \$2,095.81 for this supply. This is your Price to Compare, which varies each month depending upon your usage pattern.*

PSE&G Electric (continued)

Account number for this location 73 378 382 04

Transmission kW 63.37

Other Charges And Credits

Account number for this location 73 378 382 04

Elec Billing From Aug 15, 2017 Oct 11, 2017 \$-1,279.35
 Cancelled

Total other charges and credits \$1,279.35 CR

DIRECT ENERGY BUSINESS, LLC

Account number for this location 73 378 382 04

Through the CHOICE Program, you have chosen to purchase electricity from DIRECT ENERGY BUSINESS, LLC. If you have any questions, please contact them directly at 888-925-9115.

Adjustments 0.00

Current charges 1,616.31

Total DIRECT ENERGY BUSINESS, LLC Charges \$1,616.31

Fixed Price - 19,290 Kwh Total @ \$0.08379/Kwh

32 CEDAR AVE
 MONTCLAIR TWP NJ

Account number for this location 73 378 383 01

Your next meter reading is
 scheduled for January 17

Meter reading scheduling
 1 800 436-PSEG(7734)

Account Summary for this location

PSE&G balance from last bill \$192.51 CR

Current Charges -83.15

Credit balance \$275.66 CR

PSE&G Gas

Account number for this location 73 378 383 01

Usage Meter **3929120**

Estimated reading Aug 15 342

Estimated reading Jul 18 283

Difference 59

Conversion to CCF x 1.0339

CCF total 61.000

Conversion to therms x 1.03200

Total therms 62.952

Gas Deliveries

Bill period deliveries 4.710

Imbalance* 58.242 +

Charges PoD ID: PG000009676840338751 Rate - LVG

Delivery

Service charge \$103.43

Distribution charge 62.952 therms @ \$0.0471788 2.97

Societal Benefits 62.952 therms @ \$0.04702000 2.96

Total Delivery \$109.36

Total gas charges \$109.36

A history of PSE&G's monthly Basic Gas Supply Service (BGSS) prices are located on our website at www.pseg.com.

** The Imbalance of 58.242+ will be applied to your Gas Deliveries in the month of October. The amount and month applied may differ if you are switching third party suppliers or your account requires an adjustment.*

*See text

Other Charges And Credits

Account number for this location 73 378 383 01

Gas Billing From Aug 15, 2017 Cancelled	Sep 12, 2017	\$-192.51
Total other charges and credits		\$192.51 CR

**176 N FULLERTON AVE RENA MID
 MONTCLAIR TWP NJ**

Account number for this location 73 378 384 09

Your next meter reading is
 scheduled for January 17

Meter reading scheduling
 1 800 436-PSEG(7734)

Account Summary for this location

PSE&G balance from last bill	\$970.23
Current Charges	752.35
Total Amount Due	\$1,722.58

PSE&G Gas

Account number for this location 73 378 384 09

Usage	Meter 2415310
Estimated reading Aug 15	76930
Estimated reading Jul 18	76858
Difference	72
Conversion to CCF	x 1.0339
CCF total	74.441
Conversion to therms	x 1.03200
Total therms	76.823

Charges PoD ID: PG000011627847445191 Rate - LVG

Delivery		
Service charge		\$103.43
Distribution charge	76.823 therms @ \$0.0472515	3.63
Societal Benefits	76.823 therms @ \$0.04699110	3.61
Total Delivery		\$110.67
Total gas charges		\$110.67

A history of PSE&G's monthly Basic Gas Supply Service (BGSS) prices are located on our website at www.pseg.com.

Gas Deliveries	
Bill period deliveries	81.033
Imbalance*	4.210 -

* The Imbalance of 4.210- will be applied to your Gas Deliveries in the month of October. The amount and month applied may differ if you are switching third party suppliers or your account requires an adjustment.

*See text

PSE&G Electric

Account number for this location 73 378 384 09

Usage	Meter 278002714
Estimated reading Aug 15	2412
Actual reading Jul 18	2201
Difference	211
Meter multiplier	45
Total kWh	9495
Distribution Demands	
Annual Demand kW	50.40
Summer Demand kW	50.40
Measured Demands	

Charges PoD ID: PE000011627848245191 Rate - GLP

Delivery		
Service charge		\$4.09
Distribution charges		
Annual Demand	50.40 kW @ \$4.361706349	219.83
Summer Demand	50.40 kW @ \$8.095039683	407.99
kWh charges	9495 kWh @ \$0.011552396	109.69
Societal Benefits	9495 kWh @ \$0.007869405	74.72
Sub-Total Delivery		\$816.32
Total electric charges		\$816.32

PSE&G Electric (continued)

Account number for this location 73 378 384 09

Demand kW	50.40	*You are currently purchasing your electric supply from another supplier. If you had been purchasing your electric supply from PSE&G, you would have been billed \$1,544.05 for this supply. This is your Price to Compare, which varies each month depending upon your usage pattern.
Constant	45	
Supply Capacity		
Generation kW	74.46	
Transmission kW	65.11	

Other Charges And Credits

Account number for this location 73 378 384 09

Elec Billing From Aug 15, 2017 Cancelled	Sep 18, 2017	\$-816.32
Gas Billing From Aug 15, 2017 Cancelled	Sep 18, 2017	-153.91
Total other charges and credits		\$970.23 CR

DIRECT ENERGY BUSINESS, LLC

Account number for this location 73 378 384 09

Through the CHOICE Program, you have chosen to purchase electricity from DIRECT ENERGY BUSINESS, LLC. If you have any questions, please contact them directly at 888-925-9115.

Adjustments	0.00
Current charges	795.59
Total DIRECT ENERGY BUSINESS, LLC Charges	\$795.59

Fixed Price - 9,495 Kwh Total @ \$0.08379/Kwh

**VARIOUS LOCATIONS LTG
 MONTCLAIR TWP NJ**

Account number for this location 73 378 385 06

Your next meter reading is
 scheduled for January 03
 Meter reading scheduling
 1 800 436-PSEG(7734)

Account Summary for this location

PSE&G balance from last bill	\$1,178.90
Current Charges	318.61
Total Amount Due	\$1,497.51

Unmetered Electric Service

Account number for this location 73 378 385 06

PoD ID:	Charges	Rate - BPL
PE000011818852345191	Delivery	
PE000011939060745191	Usage/Fixture charge	\$953.65
Service from 8/3/2017 to 8/31/2017	Distribution charges	
	kWh charges 7525 kWh @ \$0.029933555	225.25
Usage 7525.0	Sub-Total Delivery	\$1,178.90
	Unmetered charges	\$1,178.90

**The total supply amount (\$318.86) is your Price to Compare for this month should you consider another electric supplier for these services. Your Price to Compare varies each month depending upon your usage pattern.*

Other Charges And Credits

Account number for this location 73 378 385 06

Elec Billing From Aug 31, 2017	Oct 11, 2017	\$-1,178.90
Cancelled		
Total other charges and credits		\$1,178.90 CR

TriEagle Energy, LP

Account number for this location 73 378 385 06

Through the CHOICE Program, you have chosen to purchase electricity from TriEagle Energy, LP. If you have any questions, please contact them directly at 877-933-2453.

Adjustments	0.00
Current charges	318.61
Total TriEagle Energy, LP Charges	\$318.61

176 N FULLERTON AVE
 MONTCLAIR TWP NJ

Account number for this location 73 378 386 03

Your next meter reading is scheduled for January 03

Meter reading scheduling
 1 800 436-PSEG(7734)

Account Summary for this location

PSE&G balance from last bill	\$24.16
Current Charges	5.55
Total Amount Due	\$29.71

Unmetered Electric Service

Account number for this location 73 378 386 03

PoD ID: PE000011818747580574	Charges	Rate - BPL
Service from 8/3/2017 to 8/31/2017	Delivery	
	Usage/Fixture charge	\$20.24
	Distribution charges	
Usage 131.0	kWh charges 131 kWh @ \$0.029934000	3.92
	Sub-Total Delivery	\$24.16
	Unmetered charges	\$24.16

**The total supply amount (\$5.55) is your Price to Compare for this month should you consider another electric supplier for these services. Your Price to Compare varies each month depending upon your usage pattern.*

Other Charges And Credits

Account number for this location 73 378 386 03

Elec Billing From Aug 31, 2017 Cancelled	Oct 11, 2017	\$-24.16
Total other charges and credits		\$24.16 CR

TriEagle Energy, LP

Account number for this location 73 378 386 03

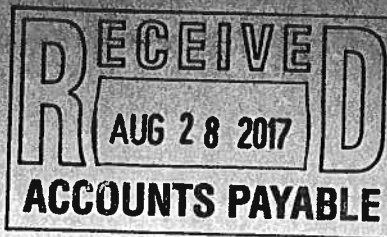
Through the CHOICE Program, you have chosen to purchase electricity from TriEagle Energy, LP. If you have any questions, please contact them directly at 877-933-2453.

Adjustments	0.00
Current charges	5.55
Total TriEagle Energy, LP Charges	\$5.55



**Monthly Statement
AUGUST 2017**

Account number 42 010 548 02



MONTCLAIR BD OF ED
MONTCLAIR TWP OF
22 VALLEY RD
MONTCLAIR NJ 07042-2709

For service at

25 MAPLE AVE GLENFIELD
MONTCLAIR TWP NJ
07042

1 855-BIZ-PSEG (249-7734)

Emergencies 24 hours/7days

Business customer service

7 AM - 5.30 PM Mon - Fri

Closed on weekend and Holidays

Visit our website

www.pseg.com

Inquiries by mail

PSE&G

PO Box 14444

New Brunswick NJ 08906-4444

Important Dates

Your payment for current charges
is due September 05, 2017.

Your meter(s) are scheduled to be
read on or about September 13.

To make a payment from a credit
card Log In to **My Account** at
pseg.com or call 1 888-575-6273

Account Summary

PSE&G balance from last bill	Pd 8/28/17 \$8,399.99 Ch 21409	\$23,228.99
Payment received Jul 21 - Thank You!		-9,287.16
Current PSE&G - Gas charges for 1 meter		112.91 G
Current PSE&G - Electric charges for 1 meter		2,398.73
Meter Product Charges		2.00
DIRECT ENERGY BUSINESS, LLC Electric Charges		4,067.62
Total Amount Due		\$20,523.09

**** SHUT-OFF NOTICE ** 1-800-357-2262 (Mon-Fri, 7:30 AM - 8:00 PM)**

Your bill is now past due. Payment of \$13,879.83 must be received by 9/5/2017 or service may be shut off. A security deposit may be required if late payments continue. A statement of customer rights and fees is shown on the reverse side.

Si en el futuro usted desea recibir la notificación de desconexión de servicio en español, por favor llame al 1-800-357-2262.

Need help understanding your energy bill? Read the enclosed "Working For You" bill newsletter for a full summary of electric and gas rate schedules, and an explanation of itemized charges on your bill.

VOUCHER M00M26

Statement of Customer Rights

PSE&G IS SUBJECT TO THE JURISDICTION OF THE N.J. BOARD OF PUBLIC UTILITIES (BPU), 44 SOUTH CLINTON AVENUE, TRENTON, NJ 08625, 1-609-341-9188 OR TOLL FREE 1-800-624-0241. **HOWEVER, YOU SHOULD CONTACT PSE&G ON ANY BILLING OR SERVICE QUESTIONS BEFORE CALLING THE BPU. THE PSE&G PHONE NUMBER IS SHOWN ON THE FRONT OF THE BILL.**

IF YOU ARE UNABLE TO MAKE A PAYMENT, YOU MAY DISCUSS REASONABLE PAYMENT ARRANGEMENTS BY VISITING ONE OF OUR CUSTOMER SERVICE CENTERS OR BY CALLING OUR CREDIT AND COLLECTION CENTER AT 1-800-357-2262 BETWEEN THE HOURS OF 7:30 AM AND 8:00 PM (MON - FRI). IF YOU WISH TO CONTEST YOUR BILL, YOU MAY VISIT ONE OF OUR CUSTOMER SERVICE CENTERS OR CALL OUR CUSTOMER INQUIRY CENTER AT 1-800-436-7734, MON - FRI, 7:00 AM - 8:00 PM AND SAT, 7:00 AM - 5:00 PM.

YOU MAY HAVE COUNSEL OR THIRD PARTY REPRESENTATION WHEN APPEARING BEFORE PSE&G TO CONTEST A BONA FIDE DISPUTED CHARGE.

IF WITHIN FIVE DAYS A REQUEST IS MADE TO THE BPU FOR AN INVESTIGATION OF THE DISPUTED CHARGE, SERVICE WILL NOT BE DISCONTINUED BECAUSE OF NONPAYMENT OF BILLS PROVIDED ALL UNDISPUTED CHARGES ARE PAID.

YOU MAY CONTACT THE BPU TO REQUEST ASSISTANCE IN THE RESOLUTION OF A BONA FIDE DISPUTED CHARGE. YOU MAY ALSO REQUEST A FORMAL HEARING WITH THE BPU CONCERNING SUCH A DISPUTED CHARGE.

**** Additional Shut Off Information ** 1-800-357-2262 (Mon-Fri, 7:30 AM - 8:00 PM)**

A reconnection fee of \$45.00 will be charged for each service that is shut off. Service may not be restored on the same day payment is made. A fee of \$30.00 will be charged if a visit is made to collect past due bills. A late payment fee may be charged for past due bills. You can avoid a security deposit and poor credit rating by paying bills by their due date.



PSE&G Gas

Usage	Meter 3832932
Actual reading Aug 15	121192
Actual reading Jul 17	121132
Conversion to CCF	x 1.0120
CCF total	60.720
Conversion to therms	x 1.03200
Total therms	62.663

Gas Deliveries	
Bill period deliveries	89.408
Imbalance*	26.745 -

*See text

Charges	PoD ID: PG000010408143545191	Rate - LVG
Delivery		
Service charge		\$107.00
Distribution charge	62.663 therms @ \$0.0472368	2.96
Societal Benefits	62.663 therms @ \$0.04707720	2.95
Total Delivery		\$112.91
Total gas charges		\$112.91

A history of PSE&G's monthly Basic Gas Supply Service (BGSS) prices are located on our website at www.pseg.com.

*The Imbalance of 26.745- will be applied to your Gas Deliveries in the month of October. The amount and month applied may differ if you are switching third party suppliers or your account requires an adjustment.

PSE&G Electric

Usage	Meter 9206404
Reading Aug 14	
On-Peak actual	5234
Off-Peak1	
Off-Peak2	
Reading Jul 15	
On-Peak actual	5112
Off-Peak1	
Off-Peak2	
Multiplier	400
Total On kWh	22,031
Total Off kWh	26,514
Total kWh	48,545

Distribution Demands	
Annual Demand kW	125.60
Summer Demand kW	125.60

Measured Demands	
On-Peak kW	125.60
Off-Peak2 kW	113.40
Constant	400

Supply Capacity	
Generation kW	85.32
Transmission kW	69.15

Charges	PoD ID: PE000010408144345191	Rate - LPLS
Delivery		
Service charge		\$371.68
Distribution charges		
Annual Demand	125.60 kW @ \$3.767038217	473.14
Summer Demand	125.60 kW @ \$8.961783439	1,125.60
kWh - On-peak	22031 kWh @ \$0.000954110	21.02
kWh - Off-peak	26514 kWh @ \$0.000953836	25.29
Societal Benefits	48545 kWh @ \$0.007868988	382.00
Sub-Total Delivery		\$2,398.73
Total electric charges		\$2,398.73

*You are currently purchasing your electric supply from another supplier. If you had been purchasing your electric supply from PSE&G, you would have been billed \$3,858.12 for this supply. This is your Price to Compare, which varies each month depending upon your usage pattern.



Meter Products and Services

Meter	Description	Amount
E 9206404	Elec web (internet access)	\$2.00
Total		\$2.00

DIRECT ENERGY BUSINESS, LLC

Through the CHOICE Program, you have chosen to purchase electricity from DIRECT ENERGY BUSINESS, LLC. If you have any questions, please contact them directly at 888-925-9115.

Adjustments	0.00
Current charges	4,067.62
Total DIRECT ENERGY BUSINESS, LLC Charges	\$4,067.62

Fixed Price - 48,545.46 Kwh Total @ \$0.08379/Kwh

Electronic Check Conversion

When you pay by check, you authorize PSE&G to use your check to make a one-time electronic fund transfer from your account. If you do not wish to participate, call 1-800-436-PSEG.

Electric & Gas Rate Information

For news about PSE&G's rate filing and upcoming public hearings visit www.pseg.com/pseandgfilings

Customer Service Centers

Open Monday through Friday, during the hours noted.

Bayonne, 608 Broadway	8am to 4:00pm
Burlington, 501 High Street	8am to 4:00pm
Camden, 1 Port Center	8am to 4:00pm
Elizabeth, 550 N. Broad Street	8am to 4:00pm
Hackensack, 214 Hudson Street	8am to 4:00pm
Hoboken, 615 Washington Street	8am to 4:00pm
Jersey City, 35 Journal Square (Corner of Bergen Ave. & Newkirk St.)	8am to 4:00pm
Newark, 80 Park Plaza	8am to 4:00pm
New Brunswick, 317 George St.	8am to 4:00pm
West Orange, 59 Main St.	8am to 4:00pm
Passaic, 651 Main Ave	8am to 4:00pm
Paterson, 301 Main St (30 Clark St)	8am to 4:00pm
Perth Amboy, 313 Madison Ave.	8am to 4:00pm
Plainfield, 120 West Seventh Street	8am to 4:00pm
Trenton, 28 West State Street	8am to 4:00pm
Union City, 4808 Bergenline Avenue	8am to 4:00pm

Bill Form Definitions

Service Charge: A fixed monthly charge related to metering, billing and account maintenance.

Distribution Charges (Gas): Charges related to delivering gas through pipes from supply sources to the customer. These charges include a therm component, and in November through March on certain rate schedules, also include a demand component.

Bill Form Definitions (continued)

Balancing Charge (Gas): This charge reflects storage related costs associated with winter gas use. This charge is only applicable in the billing months of November through March.

Demand (Gas): The highest average daily use of gas over the most recent billing months of November to March.

Supply (Gas): Charges for customers who do not choose a competitive gas supplier are called Basic Gas Supply Service (BGSS). The charges include the cost of the natural gas as well as the cost of interstate delivery of the gas to New Jersey.

Distribution Charges (Electric): Charges related to delivering electricity through wires from supply sources to the customer. These charges include both kilowatthour (kWh) and demand (kW) components.

Measured Demand (Electric): The maximum use of electricity at any time during a month or monthly time period (on or off-peak).

Annual Demand (Electric):

(For Rate HTS): The highest Measured Demand over the most recent 12 months.

(For Rates MD, ED, LPLS, LPLP): The highest Measured Demand in any time period in the current month.

Summer Demand (Electric): The Measured Demand (excluding off-peak) in each billing month of June through September.

Societal Benefits: This charge recovers the cost of government mandated programs designed to achieve public policy goals, such as energy conservation.

Securitization Transition: This charge recovers costs and associated taxes for transition bonds and for BGS transition bonds collected by PSE&G as servicer on behalf of PSE&G Transition Funding LLC and PSE&G Transition Funding II LLC, respectively.

Supply Capacity (Electric): A customer's share of the generation and transmission facilities, measured in kilowatts (kW), which must be procured to serve the system annual peak usage. The customer's share is calculated from the customer's peak usage in the prior year's summer. For new customers without prior summer usage the share is calculated from connected load.

Supply (Electric): Charges for customers who do not choose a competitive electric supplier are called Basic Generation Service (BGS). The charges include the energy as well as the generation and transmission facilities necessary to produce and transmit the energy.

TDD number for the hearing impaired 1 800 225-0072







For service at

CHURCH ST & NW COR
MONTCLAIR TWP NJ
07042

1 855-BIZ-PSEG (249-7734)
Emergencies 24 hours/7days
Business customer service
7 AM - 5.30 PM Mon - Fri
Closed on weekend and Holidays

Visit our website
www.pseg.com

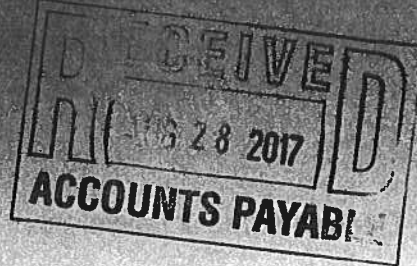
Inquiries by mail
PSE&G
PO Box 14444
New Brunswick NJ 08906-4444

Important Dates

Your payment
is due August 23, 2017.

To make a payment from a credit
card Log In to **My Account** at
pseg.com or call 1 888-575-6273

Final Bill
AUGUST 2017
Account number 66 817 793 01



MONTCLAIR BD OF ED
MONTCLAIR TWP OF
22 VALLEY RD
MONTCLAIR NJ 07042-2709

Nw Acct# 73 378 379 09

Account Summary

PSE&G balance from last bill	\$24.05
Payment received Jul 21 - Thank You!	-11.03
Current PSE&G - Unmetered Charges	10.51
DIRECT ENERGY BUSINESS, LLC Electric Charges	2.51
Total Amount Due On Aug 23, 2017	\$26.04

E

Need help understanding your energy bill? Read the enclosed "Working For You" bill newsletter for a full summary of electric and gas rate schedules, and an explanation of itemized charges on your bill.

Summer can bring severe storms with possible power outages. If there is loss of power: keep refrigerator and freezer doors closed, use caution with candles, and turn off lights and appliances to avoid overloading circuits once power is restored.

At PSE&G, we are committed to supporting your business needs. That's why we created a dedicated, toll-free phone number to address your energy questions and concerns. **PSE&G's Business Solutions Center** is available Monday-Friday, 7:00 a.m. 5:30 p.m. at **1-855-249-7734 (1-855-BIZ-PSEG).**

PSE&G can help your business save energy and money. Receive our free monthly electronic newsletter that includes money and energy saving tips, energy tools, answers to energy questions and more. **To learn more, visit pseg.com/energe**

VOUCHER M00M26

Electronic Check Conversion

When you pay by check, you authorize PSE&G to use your check to make a one-time electronic fund transfer from your account. If you do not wish to participate, call 1-800-436-PSE&G.

Electric & Gas Rate Information

For news about PSE&G's rate filing and upcoming public hearings visit www.pseg.com/pseandgfilings

Customer Service Centers

Open Monday through Friday, during the hours noted.

Bayonne, 608 Broadway	8am to 4:00pm
Burlington, 501 High Street	8am to 4:00pm
Camden, 1 Port Center	8am to 4:00pm
Elizabeth, 550 N. Broad Street	8am to 4:00pm
Hackensack, 214 Hudson Street	8am to 4:00pm
Hoboken, 615 Washington Street	8am to 4:00pm
Jersey City, 35 Journal Square (Corner of Bergen Ave. & Newkirk St.)	8am to 4:00pm
Newark, 80 Park Plaza	8am to 4:00pm
New Brunswick, 317 George St.	8am to 4:00pm
West Orange, 59 Main St.	8am to 4:00pm
Passaic, 651 Main Ave	8am to 4:00pm
Paterson, 301 Main St (30 Clark St)	8am to 4:00pm
Perth Amboy, 313 Madison Ave.	8am to 4:00pm
Plainfield, 120 West Seventh Street	8am to 4:00pm
Trenton, 28 West State Street	8am to 4:00pm
Union City, 4808 Bergenline Avenue	8am to 4:00pm

Bill Form Definitions

Service Charge: A fixed monthly charge related to metering, billing and account maintenance.

Distribution Charges (Gas): Charges related to delivering gas through pipes from supply sources to the customer. These charges include a therm component, and in November through March on certain rate schedules, also

Bill Form Definitions (continued)

Balancing Charge (Gas): This charge reflects storage related costs associated with winter gas use. This charge is only applicable in the billing months of November through March.

Demand (Gas): The highest average daily use of gas over the most recent billing months of November to March.

Supply (Gas): Charges for customers who do not choose a competitive gas supplier are called Basic Gas Supply Service (BGSS). The charges include the cost of the natural gas as well as the cost of interstate delivery of the gas to New Jersey.

Distribution Charges (Electric): Charges related to delivering electricity through wires from supply sources to the customer. These charges include both kilowatthour (kWh) and demand (kW) components.

Measured Demand (Electric): The maximum use of electricity at any time during a month or monthly time period (on or off-peak).

Annual Demand (Electric):

(For Rate HTS): The highest Measured Demand over the most recent 12 months.

(For Rates MD, ED, LPLS, LPLP): The highest Measured Demand in any time period in the current month.

Summer Demand (Electric): The Measured Demand (excluding off-peak) in each billing month of June through September.

Societal Benefits: This charge recovers the cost of government mandated programs designed to achieve public policy goals, such as energy conservation.

Securitization Transition: This charge recovers costs and associated taxes for transition bonds and for BGS transition bonds collected by PSE&G as servicer on behalf of PSE&G Transition Funding LLC and PSE&G Transition Funding II LLC, respectively.

Supply Capacity (Electric): A customer's share of the generation and transmission facilities, measured in kilowatts (kW), which must be procured to serve the system annual peak usage. The customer's share is calculated from the customer's peak usage in the prior year's summer. For new customers without prior summer usage the share is calculated from connected load.

Supply (Electric): Charges for customers who do not choose a competitive electric supplier are called Basic Generation Service (BGS). The charges include the energy as well as the generation and transmission facilities necessary to produce and transmit the energy.

TDD number for the hearing impaired 1 800 225-0072



Unmetered Electric Service

PoD ID: PE000011818803678780

Service from 7/4/2017
 to 8/2/2017

Usage	30.0
Distribution Demands	
Annual Demand kW	0.30
Summer Demand kW	0.30
Supply Capacity	
Generation kW	0.29
Transmission kW	0.25

Charges		Rate - GLP
Delivery		
Fixed services		\$1.96
Distribution charges		
Annual Demand	0.30 kW @ \$4.500000000	1.35
Summer Demand	0.30 kW @ \$8.366666700	2.51
kWh charges	30 kWh @ \$0.011552000	0.35
Societal Benefits	30 kWh @ \$0.008000000	0.24
Facilities charge		4.10
Sub-Total Delivery		\$10.51
Unmetered charges		\$10.51

**You are currently purchasing your electric supply from another supplier. If you had been purchasing your electric supply from PSE&G, you would have been billed \$5.81. This is your Price to Compare, which varies each month depending upon your usage pattern.*

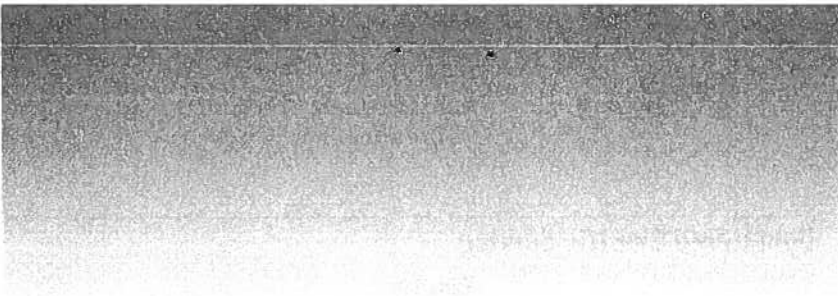
DIRECT ENERGY BUSINESS, LLC

Through the CHOICE Program, you have chosen to purchase electricity from DIRECT ENERGY BUSINESS, LLC. If you have any questions, please contact them directly at 888-925-9115.

Adjustments	0.00
Current charges	2.51
Total DIRECT ENERGY BUSINESS, LLC Charges	\$2.51

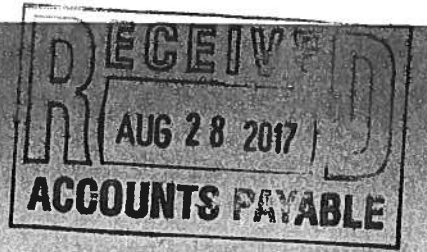
Fixed Price - 30 Kwh Total @ \$0.08379/Kwh







Final Bill
AUGUST 2017
 Account number 67 507 322 08



For service at

VARIOUS LOCATIONS LTG
 MONTCLAIR TWP NJ
 07042

MONTCLAIR BD OF ED
 MONTCLAIR TWP OF
 22 VALLEY RD
 MONTCLAIR NJ 07042-2709

1 855-BIZ-PSEG (249-7734)
Emergencies 24 hours/7days
 Business customer service
 7 AM - 5.30 PM Mon - Fri
 Closed on weekend and Holidays

*New Acct # 73-378 385 06
 E = 1497.06*

Visit our website
www.pseg.com

Inquiries by mail
 PSE&G
 PO Box 14444
 New Brunswick NJ 08906-4444

Important Dates

Your payment
 is due August 23, 2017.

To make a payment from a credit
 card Log In to **My Account** at
pseg.com or call 1 888-575-6273

Account Summary

PSE&G balance from last bill	\$3,117.19
Payment received Jul 21 - Thank You!	-1,622.51
Current PSE&G - Unmetered Charges	1,198.02
TriEagle Energy, LP Electric Charges	299.04
Total Amount Due On Aug 23, 2017	\$2,991.74

Need help understanding your energy bill? Read the enclosed "Working For You" bill newsletter for a full summary of electric and gas rate schedules, and an explanation of itemized charges on your bill.

Summer can bring severe storms with possible power outages. If there is loss of power: keep refrigerator and freezer doors closed, use caution with candles, and turn off lights and appliances to avoid overloading circuits once power is restored.

At PSE&G, we are committed to supporting your business needs. That's why we created a dedicated, toll-free phone number to address your energy questions and concerns. **PSE&G's Business Solutions Center** is available Monday-Friday, 7:00 a.m. 5:30 p.m. at **1-855-249-7734 (1-855-BIZ-PSEG).**

PSE&G can help your business save energy and money. Receive our free monthly electronic newsletter that includes money and energy saving tips, energy tools, answers to energy questions and more. **To learn more, visit pseg.com/energy**

VOUCHER M00M26

Electronic Check Conversion

When you pay by check, you authorize PSE&G to use your check to make a one-time electronic fund transfer from your account. If you do not wish to participate, call 1-800-436-PSEG.

Electric & Gas Rate Information

For news about PSE&G's rate filing and upcoming public hearings visit www.pseg.com/pseandgfilings

Customer Service Centers

Open Monday through Friday, during the hours noted.

Bayonne, 608 Broadway	8am to 4:00pm
Burlington, 501 High Street	8am to 4:00pm
Camden, 1 Port Center	8am to 4:00pm
Elizabeth, 550 N. Broad Street	8am to 4:00pm
Hackensack, 214 Hudson Street	8am to 4:00pm
Hoboken, 615 Washington Street	8am to 4:00pm
Jersey City, 35 Journal Square (Corner of Bergen Ave. & Newkirk St.)	8am to 4:00pm
Newark, 80 Park Plaza	8am to 4:00pm
New Brunswick, 317 George St.	8am to 4:00pm
West Orange, 59 Main St.	8am to 4:00pm
Passaic, 651 Main Ave	8am to 4:00pm
Paterson, 301 Main St (30 Clark St)	8am to 4:00pm
Perth Amboy, 313 Madison Ave.	8am to 4:00pm
Plainfield, 120 West Seventh Street	8am to 4:00pm
Trenton, 28 West State Street	8am to 4:00pm
Union City, 4808 Bergenline Avenue	8am to 4:00pm

Bill Form Definitions

Service Charge: A fixed monthly charge related to metering, billing and account maintenance.

Distribution Charges (Gas): Charges related to delivering gas through pipes from supply sources to the customer. These charges include a therm component, and in November through March on certain rate schedules, also

Bill Form Definitions (continued)

Balancing Charge (Gas): This charge reflects storage related costs associated with winter gas use. This charge is only applicable in the billing months of November through March.

Demand (Gas): The highest average daily use of gas over the most recent billing months of November to March.

Supply (Gas): Charges for customers who do not choose a competitive gas supplier are called Basic Gas Supply Service (BGSS). The charges include the cost of the natural gas as well as the cost of interstate delivery of the gas to New Jersey.

Distribution Charges (Electric): Charges related to delivering electricity through wires from supply sources to the customer. These charges include both kilowatthour (kWh) and demand (kW) components.

Measured Demand (Electric): The maximum use of electricity at any time during a month or monthly time period (on or off-peak).

Annual Demand (Electric):

(For Rate HTS): The highest Measured Demand over the most recent 12 months.

(For Rates MD, ED, LPLS, LPLP): The highest Measured Demand in any time period in the current month.

Summer Demand (Electric): The Measured Demand (excluding off-peak) in each billing month of June through September.

Societal Benefits: This charge recovers the cost of government mandated programs designed to achieve public policy goals, such as energy conservation.

Securitization Transition: This charge recovers costs and associated taxes for transition bonds and for BGS transition bonds collected by PSE&G as servicer on behalf of PSE&G Transition Funding I LLC and PSE&G Transition Funding II LLC, respectively.

Supply Capacity (Electric): A customer's share of the generation and transmission facilities, measured in kilowatts (kW), which must be procured to serve the system annual peak usage. The customer's share is calculated from the customer's peak usage in the prior year's summer. For new customers without prior summer usage the share is calculated from connected load.

Supply (Electric): Charges for customers who do not choose a competitive electric supplier are called Basic Generation Service (BGS). The charges include the energy as well as the generation and transmission facilities necessary to produce and transmit the energy.

TDD number for the hearing impaired 1 800 225-0072



August 2017
 Account number: 67 567 322 08
 Visit our website: www.pseg.com

Unmetered Electric Service

PoD ID: PE000011818852345191
 PE000011939060745191

Service from 7/4/2017
 to 8/2/2017

Usage 7063.0

Charges		Rate - BPL
Delivery		
Usage/Fixture charge		\$986.58
Distribution charges		
kWh charges	1402 kWh @ \$0.029950071	41.99
	Next 5661 kWh @ \$0.029932874	169.45
Sub-Total Delivery		\$1,198.02
Unmetered charges		\$1,198.02

**You are currently purchasing your electric supply from another supplier. If you had been purchasing your electric supply from PSE&G, you would have been billed \$347.27. This is your Price to Compare, which varies each month depending upon your usage pattern.*

TriEagle Energy, LP

Through the CHOICE Program, you have chosen to purchase electricity from TriEagle Energy, LP. If you have any questions, please contact them directly at 877-933-2453.

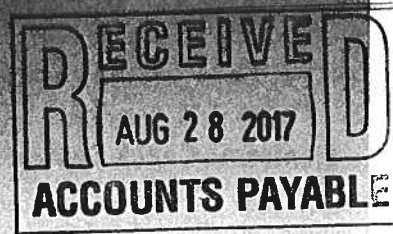
Adjustments	0.00
Current charges	299.04
Total TriEagle Energy, LP Charges	\$299.04







Final Bill
AUGUST 2017
 Account number 67 645 690 01



For service at
 176 N FULLERTON AVE
 MONTCLAIR TWP NJ
 07042-3833

MONTCLAIR BD OF ED
 MONTCLAIR TWP OF
 22 VALLEY RD
 MONTCLAIR NJ 07042-2709

1 855-BIZ-PSEG (249-7734)
Emergencies 24 hours/7days
 Business customer service
 7 AM - 5:30 PM Mon - Fri
 Closed on weekend and Holidays

New Acct # 73 378 386 03
 E = 29.83

Visit our website
www.pseg.com

Inquiries by mail
 PSE&G
 PO Box 14444
 New Brunswick NJ 08906-4444

Important Dates

Your payment
 is due August 23, 2017.

To make a payment from a credit
 card Log In to **My Account** at
pseg.com or call 1 888-575-6273

Account Summary

PSE&G balance from last bill	\$61.74
Payment received Jul 21 - Thank You!	-31.98
Current PSE&G - Unmetered Charges	24.62
TriEagle Energy, LP Electric Charges	5.21
Total Amount Due On Aug 23, 2017	\$59.59

Need help understanding your energy bill? Read the enclosed "Working For You" bill
 newsletter for a full summary of electric and gas rate schedules, and an explanation of itemized
 charges on your bill.

**Summer can bring severe storms with possible power outages. If there is loss of
 power:** keep refrigerator and freezer doors closed, use caution with candles, and turn off lights
 and appliances to avoid overloading circuits once power is restored.

At PSE&G, we are committed to supporting your business needs. That's why we
 created a dedicated, toll-free phone number to address your energy questions and concerns.
PSE&G's Business Solutions Center is available Monday-Friday, 7:00 a.m. 5:30 p.m. at
1-855-249-7734 (1-855-BIZ-PSEG).

PSE&G can help your business save energy and money. Receive our free monthly
 electronic newsletter that includes money and energy saving tips, energy tools, answers to
 energy questions and more. **To learn more, visit pseg.com/energe**

VOUCHER M00M26

Electronic Check Conversion

When you pay by check, you authorize PSE&G to use your check to make a one-time electronic fund transfer from your account. If you do not wish to participate, call 1-800-436-PSEG.

Electric & Gas Rate Information

For news about PSE&G's rate filing and upcoming public hearings visit www.pseg.com/pseandgfilings

Customer Service Centers

Open Monday through Friday, during the hours noted

Bayonne, 608 Broadway	8am to 4:00pm
Burlington, 501 High Street	8am to 4:00pm
Camden, 1 Port Center	8am to 4:00pm
Elizabeth, 550 N. Broad Street	8am to 4:00pm
Hackensack, 214 Hudson Street	8am to 4:00pm
Hoboken, 615 Washington Street	8am to 4:00pm
Jersey City, 35 Journal Square (Corner of Bergen Ave. & Newkirk St.)	8am to 4:00pm
Newark, 80 Park Plaza	8am to 4:00pm
New Brunswick, 317 George St.	8am to 4:00pm
West Orange, 59 Main St.	8am to 4:00pm
Passaic, 651 Main Ave	8am to 4:00pm
Paterson, 301 Main St (30 Clark St)	8am to 4:00pm
Perth Amboy, 313 Madison Ave.	8am to 4:00pm
Plainfield, 120 West Seventh Street	8am to 4:00pm
Trenton, 28 West State Street	8am to 4:00pm
Union City, 4808 Bergenline Avenue	8am to 4:00pm

Bill Form Definitions

Service Charge: A fixed monthly charge related to metering, billing and account maintenance.

Distribution Charges (Gas): Charges related to delivering gas through pipes from supply sources to the customer. These charges include a therm component, and in November through March on certain rate schedules, also

Bill Form Definitions (continued)

Balancing Charge (Gas): This charge reflects storage related costs associated with winter gas use. This charge is only applicable in the billing months of November through March.

Demand (Gas): The highest average daily use of gas over the most recent billing months of November to March.

Supply (Gas): Charges for customers who do not choose a competitive gas supplier are called Basic Gas Supply Service (BGSS). The charges include the cost of the natural gas as well as the cost of interstate delivery of the gas to New Jersey.

Distribution Charges (Electric): Charges related to delivering electricity through wires from supply sources to the customer. These charges include both kilowatthour (kWh) and demand (kW) components.

Measured Demand (Electric): The maximum use of electricity at any time during a month or monthly time period (on or off peak).

Annual Demand (Electric):

(For Rate HTS). The highest Measured Demand over the most recent 12 months.

(For Rates MD, ED, LPLS, LPLP): The highest Measured Demand in any time period in the current month.

Summer Demand (Electric): The Measured Demand (excluding off-peak) in each billing month of June through September.

Societal Benefits: This charge recovers the cost of government mandated programs designed to achieve public policy goals, such as energy conservation.

Securitization Transition: This charge recovers costs and associated taxes for transition bonds and for BGS transition bonds collected by PSE&G as servicer on behalf of PSE&G Transition Funding LLC and PSE&G Transition Funding II LLC, respectively.

Supply Capacity (Electric): A customer's share of the generation and transmission facilities, measured in kilowatts (kW), which must be procured to serve the system annual peak usage. The customer's share is calculated from the customer's peak usage in the prior year's summer. For new customers without prior summer usage the share is calculated from connected load.

Supply (Electric): Charges for customers who do not choose a competitive electric supplier are called Basic Generation Service (BGS). The charges include the energy as well as the generation and transmission facilities necessary to produce and transmit the energy.

TDD number for the hearing impaired 1 800 225-0072



August 2017
 Account number: 67 615 690 01
 Visit our website: www.pseg.com

Unmetered Electric Service

PoD ID: PE000011818747580574

Service from 7/4/2017
 to 8/2/2017

Usage 123.0

Charges		Rate - BPL
Delivery		
Usage/Fixture charge		\$20.94
Distribution charges		
kWh charges	24 kWh @ \$0.029946000	0.72
	Next 99 kWh @ \$0.029934000	2.96
Sub-Total Delivery		\$24.62
Unmetered charges		\$24.62

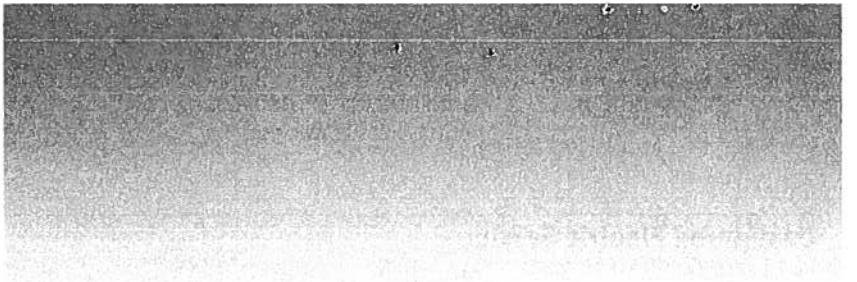
**You are currently purchasing your electric supply from another supplier. If you had been purchasing your electric supply from PSE&G, you would have been billed \$6.05. This is your Price to Compare, which varies each month depending upon your usage pattern.*

TriEagle Energy, LP

Through the CHOICE Program, you have chosen to purchase electricity from TriEagle Energy, LP. If you have any questions, please contact them directly at 877-933-2453.

Adjustments	0.00
Current charges	5.21
Total TriEagle Energy, LP Charges	\$5.21







Monthly Statement
AUGUST 2017
 Account number 42 079 504 00

RECEIVED
AUG 23 2017
ACCOUNTS PAYABLE

For service at

51 WASHINGTON ST
 MONTCLAIR TWP NJ
 07042

1 855-BIZ-PSEG (249-7734)
Emergencies 24 hours/7days
 Business customer service
 7 AM - 5.30 PM Mon - Fri
 Closed on weekend and Holidays

Visit our website
 www.pseg.com

Inquiries by mail
 PSE&G
 PO Box 14444
 New Brunswick NJ 08906-4444

Important Dates

Your payment for current charges is due September 05, 2017.

Your meter(s) are scheduled to be read on or about September 13.

To make a payment from a credit card Log In to **My Account** at pseg.com or call 1 888-575-6273

000062 000000221



MONTCLAIR TWP OF
 BOARD OF EDUCATION
 22 VALLEY RD STE A
 MONTCLAIR NJ 07042-2775

E = 4,623.12

Account Summary

*8/28/17
 \$5,457.04
 ct 21409*

PSE&G balance from last bill	\$12,112.74
Payment received Jul 21 - Thank You!	-6,655.70
Current PSE&G - Electric charges for 1 meter	2,981.85
Meter Product Charges	2.00
DIRECT ENERGY BUSINESS, LLC Electric Charges	1,639.27
Total Amount Due	\$10,080.16

**** SHUT-OFF NOTICE ** 1-800-357-2262 (Mon-Fri, 7:30 AM - 8:00 PM)**
Your bill is now past due. Payment of \$5,453.04 must be received by 9/5/2017 or service may be shut off. A security deposit may be required if late payments continue. A statement of customer rights and fees is shown on the reverse side.

Si en el futuro usted desea recibir la notificación de desconexión de servicio en español, por favor llame al 1-800-357-2262.

Need help understanding your energy bill? Read the enclosed "Working For You" bill newsletter for a full summary of electric and gas rate schedules, and an explanation of itemized charges on your bill.

Summer can bring severe storms with possible power outages. If there is loss of power: keep refrigerator and freezer doors closed, use caution with candles, and turn off lights and appliances to avoid overloading circuits once power is restored.

Statement of Customer Rights

PSE&G IS SUBJECT TO THE JURISDICTION OF THE N.J. BOARD OF PUBLIC UTILITIES (BPU), 44 SOUTH CLINTON AVENUE, TRENTON, NJ 08625, 1-609-341-9188 OR TOLL FREE 1-800-624-0241. **HOWEVER, YOU SHOULD CONTACT PSE&G ON ANY BILLING OR SERVICE QUESTIONS BEFORE CALLING THE BPU. THE PSE&G PHONE NUMBER IS SHOWN ON THE FRONT OF THE BILL.**

IF YOU ARE UNABLE TO MAKE A PAYMENT, YOU MAY DISCUSS REASONABLE PAYMENT ARRANGEMENTS BY VISITING ONE OF OUR CUSTOMER SERVICE CENTERS OR BY CALLING OUR CREDIT AND COLLECTION CENTER AT 1-800-357-2262 BETWEEN THE HOURS OF 7:30 AM AND 8:00 PM (MON - FRI). IF YOU WISH TO CONTEST YOUR BILL, YOU MAY VISIT ONE OF OUR CUSTOMER SERVICE CENTERS OR CALL OUR CUSTOMER INQUIRY CENTER AT 1-800-436-7734, MON - FRI, 7:00 AM - 8:00 PM AND SAT, 7:00 AM - 5:00 PM.

YOU MAY HAVE COUNSEL OR THIRD PARTY REPRESENTATION WHEN APPEARING BEFORE PSE&G TO CONTEST A BONA FIDE DISPUTED CHARGE.

IF WITHIN FIVE DAYS A REQUEST IS MADE TO THE BPU FOR AN INVESTIGATION OF THE DISPUTED CHARGE, SERVICE WILL NOT BE DISCONTINUED BECAUSE OF NONPAYMENT OF BILLS PROVIDED ALL UNDISPUTED CHARGES ARE PAID.

YOU MAY CONTACT THE BPU TO REQUEST ASSISTANCE IN THE RESOLUTION OF A BONA FIDE DISPUTED CHARGE. YOU MAY ALSO REQUEST A FORMAL HEARING WITH THE BPU CONCERNING SUCH A DISPUTED CHARGE.

**** Additional Shut Off Information ** 1-800-357-2262 (Mon-Fri, 7:30 AM - 8:00 PM)**

A reconnection fee of \$45.00 will be charged for each service that is shut off. Service may not be restored on the same day payment is made. A fee of \$30.00 will be charged if a visit is made to collect past due bills. A late payment fee may be charged for past due bills. You can avoid a security deposit and poor credit rating by paying bills by their due date.



PSE&G Electric

Usage In	Meter 9213653
Reading Aug 14	
Actual On-Peak	16545
Actual Off-Peak1	
Actual Off-Peak2	
Reading Jul 15	
Actual On-Peak	16235
Actual Off-Peak1	
Actual Off-Peak2	
Multiplier	80
On-peak kWh In	10432
Off-peak kWh In	14411
Total kWh In	24843

Usage Out	Meter 9213653
Reading Aug 14	
Actual On-Peak	1656
Actual Off-Peak1	
Actual Off-Peak2	
Reading Jul 15	
Actual On-Peak	1590
Actual Off-Peak1	
Actual Off-Peak2	
Multiplier	80
On-peak kWh Out	2230
Off-peak kWh Out	3049
Total kWh Out	5279
Net Usage	19564
On-peak	8202
Off-peak	11362

Distribution Demands	
Annual Demand kW	191.5

Measured Demands	
On-Peak kW	191.5
Off-Peak1 kW	0.0
Off-Peak2 kW	149.5
Constant	80

Supply Capacity	
Generation kW	0.00
Transmission kW	0.00

Charges	PoD ID: PE000011897052480545	Rate - LPLS
Delivery		
Service charge		\$371.68
Distribution charges		
Annual Demand	191.50 kW @ \$3.766997389	721.38
Summer Demand	191.50 kW @ \$8.961775457	1,716.18
kWh - On-peak	8202 kWh @ \$0.000953426	7.82
kWh - Off-peak	11362 kWh @ \$0.000954057	10.84
Societal Benefits	19564 kWh @ \$0.007869045	153.95
Sub-Total Delivery		\$2,981.85

Total electric charges \$2,981.85

**You are currently purchasing your electric supply from another supplier. If you had been purchasing your electric supply from PSE&G, you would have been billed \$1,106.76 for this supply. This is your Price to Compare, which varies each month depending upon your usage pattern.*

Bi-Directional Meter Data kWh

MM/YY	Time of Use	In-Use	Out-Use	Difference	Cumulative Difference	Billed kWh
JUN 17	On	26,479	274	26,205	0	26,205
	Off	16,351	3,950	12,401	0	12,401



PSE&G Electric (continued)

Bi-Directional Meter Data kWh (continued)						
MM/YY	Time of Use	In-Use	Out-Use	Difference	Cumulative Difference	Billed kWh
JUL 17	On	16,679	3,763	12,916	0	12,916
	Off	14,210	3,522	10,688	0	10,688
AUG 17	On	10,432	2,230	8,202	0	8,202
	Off	14,411	3,049	11,362	0	11,362
Total	On	53,590	6,267	47,323		47,323
	Off	44,972	10,521	34,451		34,451

*Anniversary Month

Meter Products and Services

Meter	Description	Amount
E 9213653	Elec web (internet access)	\$2.00
Total		\$2.00

DIRECT ENERGY BUSINESS, LLC

Through the CHOICE Program, you have chosen to purchase electricity from DIRECT ENERGY BUSINESS, LLC. If you have any questions, please contact them directly at 888-925-9115.

Adjustments	0.00
Current charges	1,639.27
Total DIRECT ENERGY BUSINESS, LLC Charges	\$1,639.27

Fixed Price - 19,563.984 Kwh Total @ \$0.08379/Kwh

Electronic Check Conversion

When you pay by check, you authorize PSE&G to use your check to make a one-time electronic fund transfer from your account. If you do not wish to participate, call 1-800-436-PSEG.

Electric & Gas Rate Information

For news about PSE&G's rate filing and upcoming public hearings visit www.pseg.com/pseandgfilings

Customer Service Centers

Open Monday through Friday, during the hours noted

Bayonne, 608 Broadway	8am to 4:00pm
Burlington, 501 High Street	8am to 4:00pm
Camden, 1 Port Center	8am to 4:00pm
Elizabeth, 550 N. Broad Street	8am to 4:00pm
Hackensack, 214 Hudson Street	8am to 4:00pm
Hoboken, 615 Washington Street	8am to 4:00pm
Jersey City, 35 Journal Square (Corner of Bergen Ave. & Newkirk St.)	8am to 4:00pm
Newark, 80 Park Plaza	8am to 4:00pm
New Brunswick, 317 George St.	8am to 4:00pm
West Orange, 59 Main St.	8am to 4:00pm
Passaic, 651 Main Ave	8am to 4:00pm
Paterson, 301 Main St (30 Clark St)	8am to 4:00pm
Perth Amboy, 313 Madison Ave.	8am to 4:00pm
Plainfield, 120 West Seventh Street	8am to 4:00pm
Trenton, 28 West State Street	8am to 4:00pm
Union City, 4808 Bergenline Avenue	8am to 4:00pm

Bill Form Definitions

Service Charge: A fixed monthly charge related to metering, billing and account maintenance.

Distribution Charges (Gas): Charges related to delivering gas through pipes from supply sources to the customer. These charges include a therm component, and in November through March on certain rate schedules, also include a demand component.

Bill Form Definitions (continued)

Balancing Charge (Gas): This charge reflects storage related costs associated with winter gas use. This charge is only applicable in the billing months of November through March.

Demand (Gas): The highest average daily use of gas over the most recent billing months of November to March.

Supply (Gas): Charges for customers who do not choose a competitive gas supplier are called Basic Gas Supply Service (BGSS). The charges include the cost of the natural gas as well as the cost of interstate delivery of the gas to New Jersey.

Distribution Charges (Electric): Charges related to delivering electricity through wires from supply sources to the customer. These charges include both kilowatthour (kWh) and demand (kW) components.

Measured Demand (Electric): The maximum use of electricity at any time during a month or monthly time period (on or off-peak).

Annual Demand (Electric):

(For Rate HTS): The highest Measured Demand over the most recent 12 months.

(For Rates MD, ED, LPLS, LPLP): The highest Measured Demand in any time period in the current month.

Summer Demand (Electric): The Measured Demand (excluding off-peak) in each billing month of June through September.

Societal Benefits: This charge recovers the cost of government mandated programs designed to achieve public policy goals, such as energy conservation.

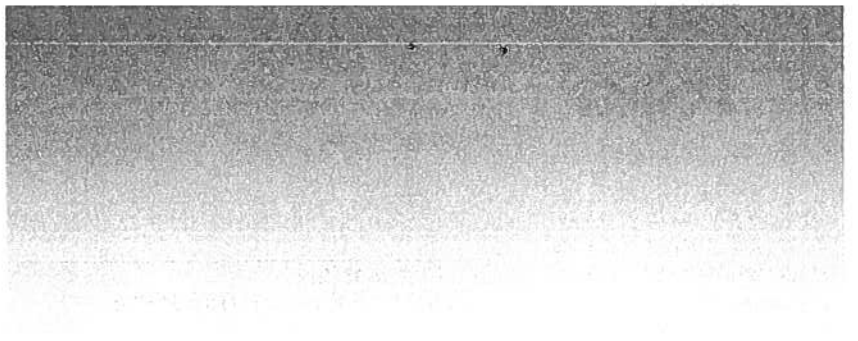
Securitization Transition: This charge recovers costs and associated taxes for transition bonds and for BGS transition bonds collected by PSE&G as servicer on behalf of PSE&G Transition Funding LLC and PSE&G Transition Funding II LLC, respectively.

Supply Capacity (Electric): A customer's share of the generation and transmission facilities, measured in kilowatts (kW), which must be procured to serve the system annual peak usage. The customer's share is calculated from the customer's peak usage in the prior year's summer. For new customers without prior summer usage the share is calculated from connected load.

Supply (Electric): Charges for customers who do not choose a competitive electric supplier are called Basic Generation Service (BGS). The charges include the energy as well as the generation and transmission facilities necessary to produce and transmit the energy.

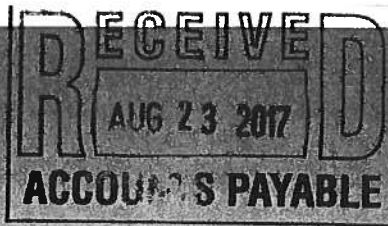
TDD number for the hearing impaired 1 800 225-0072







Monthly Statement
AUGUST 2017
 Account number 42 003 456 09



For service at

173 BELLEVUE AVE HEBRON MID
 MONTCLAIR TWP NJ
 07043-1818

1 855-BIZ-PSEG (249-7734)
Emergencies 24 hours/7days
 Business customer service
 7 AM - 5.30 PM Mon - Fri
 Closed on weekend and Holidays

Visit our website
www.pseg.com

Inquiries by mail
 PSE&G
 PO Box 14444
 New Brunswick NJ 08906-4444

Important Dates

Your payment for current charges is due September 01, 2017.

Your meter(s) are scheduled to be read on or about September 14.

To make a payment from a credit card Log In to **My Account** at pseg.com or call 1 888-575-6273

000066 000000311

 MONTCLAIR BD OF ED
 MONTCLAIR TWP OF
 22 VALLEY RD
 MONTCLAIR NJ 07042-2709

Account Summary Pd 8/28/17 Ck 2/14/09

PSE&G balance from last bill	\$12,852.49
Current PSE&G - Gas charges for 1 meter	109.01
Total Amount Due	\$12,961.50

**** SHUT-OFF NOTICE ** 1-800-357-2262 (Mon-Fri, 7:30 AM - 8:00 PM)**
Your bill is now past due. Payment of \$8,724.45 must be received by 9/1/2017 or service may be shut off. A security deposit may be required if late payments continue. A statement of customer rights and fees is shown on the reverse side.

Si en el futuro usted desea recibir la notificación de desconexión de servicio en español, por favor llame al 1-800-357-2262.

Need help understanding your energy bill? Read the enclosed "Working For You" bill newsletter for a full summary of electric and gas rate schedules, and an explanation of itemized charges on your bill.

Summer can bring severe storms with possible power outages. If there is loss of power: keep refrigerator and freezer doors closed, use caution with candles, and turn off lights and appliances to avoid overloading circuits once power is restored.

PSE&G can help your business save energy and money. Receive our free monthly electronic newsletter that includes money and energy saving tips, energy tools, answers to energy questions and more. **To learn more, visit pseg.com/energy**

Statement of Customer Rights

PSE&G IS SUBJECT TO THE JURISDICTION OF THE N.J. BOARD OF PUBLIC UTILITIES (BPU), 44 SOUTH CLINTON AVENUE, TRENTON, NJ 08625, 1-609-341-9188 OR TOLL FREE 1-800-624-0241. **HOWEVER, YOU SHOULD CONTACT PSE&G ON ANY BILLING OR SERVICE QUESTIONS BEFORE CALLING THE BPU. THE PSE&G PHONE NUMBER IS SHOWN ON THE FRONT OF THE BILL.**

IF YOU ARE UNABLE TO MAKE A PAYMENT, YOU MAY DISCUSS REASONABLE PAYMENT ARRANGEMENTS BY VISITING ONE OF OUR CUSTOMER SERVICE CENTERS OR BY CALLING OUR CREDIT AND COLLECTION CENTER AT 1-800-357-2262 BETWEEN THE HOURS OF 7:30 AM AND 8:00 PM (MON - FRI). IF YOU WISH TO CONTEST YOUR BILL, YOU MAY VISIT ONE OF OUR CUSTOMER SERVICE CENTERS OR CALL OUR CUSTOMER INQUIRY CENTER AT 1-800-436-7734, MON - FRI, 7:00 AM - 8:00 PM AND SAT, 7:00 AM - 5:00 PM.

YOU MAY HAVE COUNSEL OR THIRD PARTY REPRESENTATION WHEN APPEARING BEFORE PSE&G TO CONTEST A BONA FIDE DISPUTED CHARGE.

IF WITHIN FIVE DAYS A REQUEST IS MADE TO THE BPU FOR AN INVESTIGATION OF THE DISPUTED CHARGE, SERVICE WILL NOT BE DISCONTINUED BECAUSE OF NONPAYMENT OF BILLS PROVIDED ALL UNDISPUTED CHARGES ARE PAID.

YOU MAY CONTACT THE BPU TO REQUEST ASSISTANCE IN THE RESOLUTION OF A BONA FIDE DISPUTED CHARGE. YOU MAY ALSO REQUEST A FORMAL HEARING WITH THE BPU CONCERNING SUCH A DISPUTED CHARGE.

*** * Additional Shut Off Information * * 1-800-357-2262 (Mon-Fri, 7:30 AM - 8:00 PM)**

A reconnection fee of \$45.00 will be charged for each service that is shut off. Service may not be restored on the same day payment is made. A fee of \$30.00 will be charged if a visit is made to collect past due bills. A late payment fee may be charged for past due bills. You can avoid a security deposit and poor credit rating by paying bills by their due date.



August 2017
 Account number: 42 003 456 09
 Visit our website: www.pseg.com

PSE&G Gas

Usage	Meter 3637662
Actual reading Aug 15	285369
Actual reading Jul 17	285349
Conversion to CCF	x 1.0339
CCF total	20.678
Conversion to therms	x 1.03202
Total therms	21.340

Gas Deliveries	
Bill period deliveries	8.295
Imbalance*	13.045 +

*See text

Charges	PoD ID: PG000011626833545191	Rate - LVG
Delivery		
Service charge		\$107.00
Distribution charge	21.340 therms @ \$0.0473290	1.01
Societal Benefits	21.340 therms @ \$0.04686040	1.00
Total Delivery		\$109.01
Total gas charges		\$109.01

A history of PSE&G's monthly Basic Gas Supply Service (BGSS) prices are located on our website at www.pseg.com.

* The Imbalance of 13.045+ will be applied to your Gas Deliveries in the month of October. The amount and month applied may differ if you are switching third party suppliers or your account requires an adjustment.



Electronic Check Conversion

When you pay by check, you authorize PSE&G to use your check to make a one-time electronic fund transfer from your account. If you do not wish to participate, call 1-800-436-PSEG.

Electric & Gas Rate Information

For news about PSE&G's rate filing and upcoming public hearings visit www.pseg.com/pseandgfilings

Customer Service Centers

Open Monday through Friday, during the hours noted

Bayonne, 608 Broadway	8am to 4:00pm
Burlington, 501 High Street	8am to 4:00pm
Camden, 1 Port Center	8am to 4:00pm
Elizabeth, 550 N. Broad Street	8am to 4:00pm
Hackensack, 214 Hudson Street	8am to 4:00pm
Hoboken, 615 Washington Street	8am to 4:00pm
Jersey City, 35 Journal Square (Corner of Bergen Ave. & Newkirk St.)	8am to 4:00pm
Newark, 80 Park Plaza	8am to 4:00pm
New Brunswick, 317 George St.	8am to 4:00pm
West Orange, 59 Main St.	8am to 4:00pm
Passaic, 651 Main Ave	8am to 4:00pm
Paterson, 301 Main St (30 Clark St)	8am to 4:00pm
Perth Amboy, 313 Madison Ave.	8am to 4:00pm
Plainfield, 120 West Seventh Street	8am to 4:00pm
Trenton, 28 West State Street	8am to 4:00pm
Union City, 4808 Bergenline Avenue	8am to 4:00pm

Bill Form Definitions

Service Charge: A fixed monthly charge related to metering, billing and account maintenance.

Distribution Charges (Gas): Charges related to delivering gas through pipes from supply sources to the customer. These charges include a therm component, and in November through March on certain rate schedules, also include a demand component.

Bill Form Definitions (continued)

Balancing Charge (Gas): This charge reflects storage related costs associated with winter gas use. This charge is only applicable in the billing months of November through March.

Demand (Gas): The highest average daily use of gas over the most recent billing months of November to March.

Supply (Gas): Charges for customers who do not choose a competitive gas supplier are called Basic Gas Supply Service (BGSS). The charges include the cost of the natural gas as well as the cost of interstate delivery of the gas to New Jersey.

Distribution Charges (Electric): Charges related to delivering electricity through wires from supply sources to the customer. These charges include both kilowatt-hour (kWh) and demand (kW) components.

Measured Demand (Electric): The maximum use of electricity at any time during a month or monthly time period (on or off-peak)

Annual Demand (Electric):

(For Rate HTS): The highest Measured Demand over the most recent 12 months

(For Rates MD, ED, LPLS, LPLP): The highest Measured Demand in any time period in the current month.

Summer Demand (Electric): The Measured Demand (excluding off-peak) in each billing month of June through September.

Societal Benefits: This charge recovers the cost of government mandated programs designed to achieve public policy goals, such as energy conservation.

Securitization Transition: This charge recovers costs and associated taxes for transition bonds and for BGS transition bonds collected by PSE&G as servicer on behalf of PSF&G Transition Funding LLC and PSE&G Transition Funding II LLC, respectively.

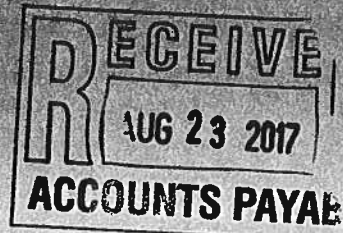
Supply Capacity (Electric): A customer's share of the generation and transmission facilities, measured in kilowatts (kW), which must be procured to serve the system annual peak usage. The customer's share is calculated from the customer's peak usage in the prior year's summer. For new customers without prior summer usage the share is calculated from connected load.

Supply (Electric): Charges for customers who do not choose a competitive electric supplier are called Basic Generation Service (BGS). The charges include the energy as well as the generation and transmission facilities necessary to produce and transmit the energy.

TDD number for the hearing impaired 1 800 225 0072



Monthly Statement
AUGUST 2017
 Account number 42 003 456 09



For service at

173 BELLEVUE AVE HEBRON MID
 MONTCLAIR TWP NJ
 07043-1818

1 855-BIZ-PSEG (249-7734)
Emergencies 24 hours/7days
 Business customer service
 7 AM - 5.30 PM Mon - Fri
 Closed on weekend and Holidays

Visit our website
 www.pseg.com

Inquiries by mail
 PSE&G
 PO Box 14444
 New Brunswick NJ 08906-4444

Important Dates

Your payment for current charges is due August 31, 2017.

Your meter(s) are scheduled to be read on or about September 13.

To make a payment from a credit card Log In to **My Account** at pseg.com or call 1 888-575-6273

000100 000000306



MONTCLAIR BD OF ED
 MONTCLAIR TWP OF
 22 VALLEY RD
 MONTCLAIR NJ 07042-2709

Account Summary

PSE&G balance from last bill	<i>Pd 8/28/17 \$6,617.35 CLANDON</i>	\$17,488.73
Payment received Jul 21 - Thank You!		-8,764.28
Current PSE&G - Electric charges for 1 meter		4,128.04 <i>e</i>
Total Amount Due		\$12,852.49

**** SHUT-OFF NOTICE ** 1-800-357-2262 (Mon-Fri, 7:30 AM - 8:00 PM)**
Your bill is now past due. Payment of \$8,724.45 must be received by 8/31/2017 or service may be shut off. A security deposit may be required if late payments continue. A statement of customer rights and fees is shown on the reverse side.

Si en el futuro usted desea recibir la notificación de desconexión de servicio en español, por favor llame al 1-800-357-2262.

Need help understanding your energy bill? Read the enclosed "Working For You" bill newsletter for a full summary of electric and gas rate schedules, and an explanation of itemized charges on your bill.

Summer can bring severe storms with possible power outages. If there is loss of power: keep refrigerator and freezer doors closed, use caution with candles, and turn off lights and appliances to avoid overloading circuits once power is restored.

Statement of Customer Rights

PSE&G IS SUBJECT TO THE JURISDICTION OF THE N.J. BOARD OF PUBLIC UTILITIES (BPU), 44 SOUTH CLINTON AVENUE, TRENTON, NJ 08625, 1-609-341-9188 OR TOLL FREE 1-800-624-0241. **HOWEVER, YOU SHOULD CONTACT PSE&G ON ANY BILLING OR SERVICE QUESTIONS BEFORE CALLING THE BPU. THE PSE&G PHONE NUMBER IS SHOWN ON THE FRONT OF THE BILL.**

IF YOU ARE UNABLE TO MAKE A PAYMENT, YOU MAY DISCUSS REASONABLE PAYMENT ARRANGEMENTS BY VISITING ONE OF OUR CUSTOMER SERVICE CENTERS OR BY CALLING OUR CREDIT AND COLLECTION CENTER AT 1-800-357-2262 BETWEEN THE HOURS OF 7:30 AM AND 8:00 PM (MON - FRI). IF YOU WISH TO CONTEST YOUR BILL, YOU MAY VISIT ONE OF OUR CUSTOMER SERVICE CENTERS OR CALL OUR CUSTOMER INQUIRY CENTER AT 1-800-436-7734, MON - FRI, 7:00 AM - 8:00 PM AND SAT, 7:00 AM - 5:00 PM.

YOU MAY HAVE COUNSEL OR THIRD PARTY REPRESENTATION WHEN APPEARING BEFORE PSE&G TO CONTEST A BONA FIDE DISPUTED CHARGE.

IF WITHIN FIVE DAYS A REQUEST IS MADE TO THE BPU FOR AN INVESTIGATION OF THE DISPUTED CHARGE, SERVICE WILL NOT BE DISCONTINUED BECAUSE OF NONPAYMENT OF BILLS PROVIDED ALL UNDISPUTED CHARGES ARE PAID.

YOU MAY CONTACT THE BPU TO REQUEST ASSISTANCE IN THE RESOLUTION OF A BONA FIDE DISPUTED CHARGE. YOU MAY ALSO REQUEST A FORMAL HEARING WITH THE BPU CONCERNING SUCH A DISPUTED CHARGE.

*** * Additional Shut Off Information * * 1-800-357-2262 (Mon-Fri, 7:30 AM - 8:00 PM)**

A reconnection fee of \$45.00 will be charged for each service that is shut off. Service may not be restored on the same day payment is made. A fee of \$30.00 will be charged if a visit is made to collect past due bills. A late payment fee may be charged for past due bills. You can avoid a security deposit and poor credit rating by paying bills by their due date.



PSE&G Electric

Usage	Meter 9205674
Reading Aug 14	
On-Peak actual	3890
Off-Peak1	
Off-Peak2	
Reading Jul 15	
On-Peak actual	3813
Off-Peak1	
Off-Peak2	
Multiplier	400
Total On kWh	13,431
Total Off kWh	17,216
Total kWh	30,647
Distribution Demands	
Annual Demand kW	72.00
Summer Demand kW	72.00
Measured Demands	
On-Peak kW	72.00
Off-Peak2 kW	46.80
Constant	400
Supply Capacity	
Generation kW	64.99
Transmission kW	53.43

Charges	PoD ID: PE000011626834345191	Rate - LPLS
Delivery		
Service charge		\$371.68
Distribution charges		
Annual Demand	72.00 kW @ \$3.766944444	271.22
Summer Demand	72.00 kW @ \$8.961805556	645.25
kWh - On-peak	13431 kWh @ \$0.000953764	12.81
kWh - Off-peak	17216 kWh @ \$0.000953764	16.42
Societal Benefits	30647 kWh @ \$0.007868959	241.16
Sub-Total Delivery		\$1,558.54
Supply*		
BGS Capacity		
Generation	64.99 kW @ \$6.188036555	402.21
Transmission	53.43 kW @ \$8.525443078	455.54
BGS Energy		
On-peak	7153 kWh @ \$0.074550538	533.26
Next	6278 kWh @ \$0.067217267	421.99
Off-peak	9824 kWh @ \$0.047089780	462.61
Next	7392 kWh @ \$0.039757846	293.89
Sub-Total Supply		\$2,569.50
Total electric charges		\$4,128.04

**The total supply amount (\$2,569.50) is your Price to Compare for this month should you consider another electric supplier for these services. Your Price to Compare varies each month depending upon your usage pattern.*



Electronic Check Conversion

When you pay by check, you authorize PSE&G to use your check to make a one-time electronic fund transfer from your account. If you do not wish to participate, call 1-800-436-PSEG.

Electric & Gas Rate Information

For news about PSE&G's rate filing and upcoming public hearings visit www.pseg.com/riseandfiling

Customer Service Centers

Open Monday through Friday, during the hours noted

Bayonne, 608 Broadway	8am to 4:00pm
Burlington, 501 High Street	8am to 4:00pm
Camden, 1 Port Center	8am to 4:00pm
Elizabeth, 550 N. Broad Street	8am to 4:00pm
Hackensack, 214 Hudson Street	8am to 4:00pm
Hoboken, 615 Washington Street	8am to 4:00pm
Jersey City, 35 Journal Square (Corner of Bergen Ave. & Newkirk St.)	8am to 4:00pm
Newark, 80 Park Plaza	8am to 4:00pm
New Brunswick, 317 George St.	8am to 4:00pm
West Orange, 59 Main St.	8am to 4:00pm
Passaic, 651 Main Ave	8am to 4:00pm
Paterson, 301 Main St (30 Clark St)	8am to 4:00pm
Perth Amboy, 313 Madison Ave.	8am to 4:00pm
Plainfield, 120 West Seventh Street	8am to 4:00pm
Trenton, 28 West State Street	8am to 4:00pm
Union City, 4808 Bergenline Avenue	8am to 4:00pm

Bill Form Definitions

Service Charge: A fixed monthly charge related to metering, billing and account maintenance.

Distribution Charges (Gas): Charges related to delivering gas through pipes from supply sources to the customer. These charges include a therm component, and in November through March on certain rate schedules, also include a demand component.

Bill Form Definitions (continued)

Balancing Charge (Gas): This charge reflects storage related costs associated with winter gas use. This charge is only applicable in the billing months of November through March.

Demand (Gas): The highest average daily use of gas over the most recent billing months of November to March.

Supply (Gas): Charges for customers who do not choose a competitive gas supplier are called Basic Gas Supply Service (BGSS). The charges include the cost of the natural gas as well as the cost of interstate delivery of the gas to New Jersey.

Distribution Charges (Electric): Charges related to delivering electricity through wires from supply sources to the customer. These charges include both kilowatt-hour (kWh) and demand (kW) components.

Measured Demand (Electric): The maximum use of electricity at any time during a month or monthly time period (on or off-peak).

Annual Demand (Electric):

(For Rate HTS): The highest Measured Demand over the most recent 12 months.

(For Rates MD, ED, LPLS, LPI P): The highest Measured Demand in any time period in the current month.

Summer Demand (Electric): The Measured Demand (excluding off-peak) in each billing month of June through September.

Societal Benefits: This charge recovers the cost of government mandated programs designed to achieve public policy goals, such as energy conservation.

Securitization Transition: This charge recovers costs and associated taxes for transition bonds and for BGS transition bonds collected by PSE&G as servicer on behalf of PSE&G Transition Funding LLC and PSE&G Transition Funding II LLC, respectively.

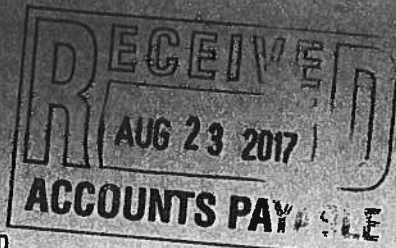
Supply Capacity (Electric): A customer's share of the generation and transmission facilities, measured in kilowatts (kW), which must be procured to serve the system annual peak usage. The customer's share is calculated from the customer's peak usage in the prior year's summer. For new customers without prior summer usage the share is calculated from connected load.

Supply (Electric): Charges for customers who do not choose a competitive electric supplier are called Basic Generation Service (BGS). The charges include the energy as well as the generation and transmission facilities necessary to produce and transmit the energy.

TDD number for the hearing impaired 1 800 225-0072



Monthly Statement
 AUGUST 2017
 Account number 42 003 519 00



000065 000000220
 MONTCLAIR BD OF ED
 TWSP OF MONTCLAIR
 22 VALLEY RD
 MONTCLAIR NJ 07042-2709

E = 11, 917.82

For service at

100 CHESTNUT ST HIGH SCH
 MONTCLAIR TWP NJ
 07042-2908

1 855-BIZ-PSEG (249-7734)
Emergencies 24 hours/7 days
 Business customer service
 7 AM - 5.30 PM Mon - Fri
 Closed on weekend and Holidays

Visit our website
 www.pseg.com

Inquiries by mail
 PSE&G
 PO Box 14444
 New Brunswick NJ 08906-4444

Important Dates

Your payment for current charges
 is due September 05, 2017.

Your meter(s) are scheduled to be
 read on or about September 14.

To make a payment from a credit
 card Log In to **My Account** at
 pseg.com or call 1 888-575-6273

Account Summary

PSE&G balance from last bill	<i>Pd \$ 29,077.31 8/28/17</i>	\$29,079.31
Payment received Jul 21 - Thank You!		-15,014.26
Current PSE&G - Gas charges for 2 meters		231.77
Current PSE&G - Electric charges for 1 meter		4,348.21
Meter Product Charges		2.00
DIRECT ENERGY BUSINESS, LLC Electric Charges		7,567.61
Total Amount Due		\$26,214.64

**** SHUT-OFF NOTICE ** 1-800-357-2262 (Mon-Fri, 7:30 AM - 8:00 PM)**
Your bill is now past due. Payment of \$14,061.05 must be received by 9/5/2017 or service may be shut off. A security deposit may be required if late payments continue. A statement of customer rights and fees is shown on the reverse side.

Si en el futuro usted desea recibir la notificación de desconexión de servicio en español, por favor llame al 1-800-357-2262.

Need help understanding your energy bill? Read the enclosed "Working For You" bill newsletter for a full summary of electric and gas rate schedules, and an explanation of itemized charges on your bill.

Statement of Customer Rights

PSE&G IS SUBJECT TO THE JURISDICTION OF THE N.J. BOARD OF PUBLIC UTILITIES (BPU), 44 SOUTH CLINTON AVENUE, TRENTON, NJ 08625, 1-609-341-9188 OR TOLL FREE 1-800-624-0241. **HOWEVER, YOU SHOULD CONTACT PSE&G ON ANY BILLING OR SERVICE QUESTIONS BEFORE CALLING THE BPU. THE PSE&G PHONE NUMBER IS SHOWN ON THE FRONT OF THE BILL.**

IF YOU ARE UNABLE TO MAKE A PAYMENT, YOU MAY DISCUSS REASONABLE PAYMENT ARRANGEMENTS BY VISITING ONE OF OUR CUSTOMER SERVICE CENTERS OR BY CALLING OUR CREDIT AND COLLECTION CENTER AT 1-800-357-2262 BETWEEN THE HOURS OF 7:30 AM AND 8:00 PM (MON - FRI). IF YOU WISH TO CONTEST YOUR BILL, YOU MAY VISIT ONE OF OUR CUSTOMER SERVICE CENTERS OR CALL OUR CUSTOMER INQUIRY CENTER AT 1-800-436-7734, MON - FRI, 7:00 AM - 8:00 PM AND SAT, 7:00 AM - 5:00 PM.

YOU MAY HAVE COUNSEL OR THIRD PARTY REPRESENTATION WHEN APPEARING BEFORE PSE&G TO CONTEST A BONA FIDE DISPUTED CHARGE.

IF WITHIN FIVE DAYS A REQUEST IS MADE TO THE BPU FOR AN INVESTIGATION OF THE DISPUTED CHARGE, SERVICE WILL NOT BE DISCONTINUED BECAUSE OF NONPAYMENT OF BILLS PROVIDED ALL UNDISPUTED CHARGES ARE PAID.

YOU MAY CONTACT THE BPU TO REQUEST ASSISTANCE IN THE RESOLUTION OF A BONA FIDE DISPUTED CHARGE. YOU MAY ALSO REQUEST A FORMAL HEARING WITH THE BPU CONCERNING SUCH A DISPUTED CHARGE.

**** Additional Shut Off Information ** 1-800-357-2262 (Mon-Fri, 7:30 AM - 8:00 PM)**

A reconnection fee of \$45.00 will be charged for each service that is shut off. Service may not be restored on the same day payment is made. A fee of \$30.00 will be charged if a visit is made to collect past due bills. A late payment fee may be charged for past due bills. You can avoid a security deposit and poor credit rating by paying bills by their due date.



PSE&G Gas

Usage	Meter 2579052
Estimated reading Aug 15	8436
Actual reading Jul 17	8185
Conversion to CCF	x 1.0682
CCF total	268.118
Conversion to therms	x 1.03200
Total therms	276.698

Gas Deliveries	
Bill period deliveries	134.387
Imbalance*	142.311 +

*See text

Usage	Meter 1784994
Actual reading Aug 15	522254
Actual reading Jul 17	522000
Conversion to CCF	x 1.0070
CCF total	255.778
Conversion to therms	x 1.03200
Total therms	263.963

Gas Deliveries	
Bill period deliveries	112.030
Imbalance*	151.933 +

*See text

Charges PoD ID: PG000008461142538751 Rate - GSG

Delivery		
Service charge		\$12.39
Distribution charge	276.698 therms @ \$0.2691743	74.48
Societal Benefits	276.698 therms @ \$0.04705490	13.02
Total Delivery		\$99.89
Total gas charges		\$99.89

A history of PSE&G's monthly Basic Gas Supply Service (BGSS) prices are located on our website at www.pseg.com.

* The Imbalance of 142.311+ will be applied to your Gas Deliveries in the month of October. The amount and month applied may differ if you are switching third party suppliers or your account requires an adjustment.

Charges PoD ID: PG000008461143338751 Rate - LVG

Delivery		
Service charge		\$107.00
Distribution charge	263.963 therms @ \$0.0472036	12.46
Societal Benefits	263.963 therms @ \$0.04705200	12.42
Total Delivery		\$131.88
Total gas charges		\$131.88

A history of PSE&G's monthly Basic Gas Supply Service (BGSS) prices are located on our website at www.pseg.com.

* The Imbalance of 151.933+ will be applied to your Gas Deliveries in the month of October. The amount and month applied may differ if you are switching third party suppliers or your account requires an adjustment.

PSE&G Electric

Usage	Meter 9213601
Reading Aug 14	
On-Peak actual	7325
Off-Peak1	
Off-Peak2	
Reading Jul 15	
On-Peak actual	7099
Off-Peak1	
Off-Peak2	
Multiplier	400
Total On kWh	47,512
Total Off kWh	42,804
Total kWh	90,316

Distribution Demands

Charges PoD ID: PE000008461144138751 Rate - LPLS

Delivery		
Service charge		\$371.68
Distribution charges		
Annual Demand	249.80 kW @ \$3.767013611	941.00
Summer Demand	249.80 kW @ \$8.961809448	2,238.66
kWh - On-peak	47512 kWh @ \$0.000954075	45.33
kWh - Off-peak	42804 kWh @ \$0.000954116	40.84
Societal Benefits	90316 kWh @ \$0.007869038	710.70
Sub-Total Delivery		\$4,348.21

Total electric charges \$4,348.21

*You are currently purchasing your electric supply from another supplier. If you had been purchasing your electric supply from PSE&G, you would have been billed \$7,643.04 for this



PSE&G Electric (continued)

Annual Demand kW 249.80
Summer Demand kW 249.80
supply. This is your Price to Compare, which varies each month depending upon your usage pattern.

Measured Demands

On-Peak kW 249.80
Off-Peak2 kW 196.90
Constant 400

Supply Capacity

Generation kW 194.65
Transmission kW 138.31

Meter Products and Services

Meter	Description	Amount
E 9213601	Elec web (internet access)	\$2.00
Total		\$2.00

DIRECT ENERGY BUSINESS, LLC

Through the CHOICE Program, you have chosen to purchase electricity from DIRECT ENERGY BUSINESS, LLC. If you have any questions, please contact them directly at 888-925-9115.

Adjustments	0.00
Current charges	7,567.61
Total DIRECT ENERGY BUSINESS, LLC Charges	\$7,567.61

Fixed Price - 90,316.44 Kwh Total @ \$0.08379/Kwh

Electronic Check Conversion

When you pay by check, you authorize PSE&G to use your check to make a one-time electronic fund transfer from your account. If you do not wish to participate, call 1-800-436-PSEG.

Electric & Gas Rate Information

For news about PSE&G's rate filing and upcoming public hearings visit www.pseg.com/pseandgfilings

Customer Service Centers

Open Monday through Friday, during the hours noted.

Bayonne, 608 Broadway	8am to 4:00pm
Burlington, 501 High Street	8am to 4:00pm
Camden, 1 Port Center	8am to 4:00pm
Elizabeth, 550 N. Broad Street	8am to 4:00pm
Hackensack, 214 Hudson Street	8am to 4:00pm
Hoboken, 615 Washington Street	8am to 4:00pm
Jersey City, 35 Journal Square (Corner of Bergen Ave. & Newkirk St.)	8am to 4:00pm
Newark, 80 Park Plaza	8am to 4:00pm
New Brunswick, 317 George St.	8am to 4:00pm
West Orange, 59 Main St.	8am to 4:00pm
Passaic, 651 Main Ave	8am to 4:00pm
Paterson, 301 Main St (30 Clark St)	8am to 4:00pm
Perth Amboy, 313 Madison Ave.	8am to 4:00pm
Plainfield, 120 West Seventh Street	8am to 4:00pm
Trenton, 28 West State Street	8am to 4:00pm
Union City, 4808 Bergenline Avenue	8am to 4:00pm

Bill Form Definitions

Service Charge: A fixed monthly charge related to metering, billing and account maintenance.

Distribution Charges (Gas): Charges related to delivering gas through pipes from supply sources to the customer. These charges include a therm component, and in November through March on certain rate schedules, also include a demand component.

Bill Form Definitions (continued)

Balancing Charge (Gas): This charge reflects storage related costs associated with winter gas use. This charge is only applicable in the billing months of November through March.

Demand (Gas): The highest average daily use of gas over the most recent billing months of November to March.

Supply (Gas): Charges for customers who do not choose a competitive gas supplier are called Basic Gas Supply Service (BGSS). The charges include the cost of the natural gas as well as the cost of interstate delivery of the gas to New Jersey.

Distribution Charges (Electric): Charges related to delivering electricity through wires from supply sources to the customer. These charges include both kilowatthour (kWh) and demand (kW) components.

Measured Demand (Electric): The maximum use of electricity at any time during a month or monthly time period (on or off-peak).

Annual Demand (Electric):

(For Rate HTS): The highest Measured Demand over the most recent 12 months.

(For Rates MD, ED, LPLS, LPLP): The highest Measured Demand in any time period in the current month.

Summer Demand (Electric): The Measured Demand (excluding off-peak) in each billing month of June through September.

Societal Benefits: This charge recovers the cost of government mandated programs designed to achieve public policy goals, such as energy conservation.

Securitization Transition: This charge recovers costs and associated taxes for transition bonds and for BGS transition bonds collected by PSE&G as servicer on behalf of PSE&G Transition Funding LLC and PSE&G Transition Funding II LLC, respectively.

Supply Capacity (Electric): A customer's share of the generation and transmission facilities, measured in kilowatts (kW), which must be procured to serve the system annual peak usage. The customer's share is calculated from the customer's peak usage in the prior year's summer. For new customers without prior summer usage the share is calculated from connected load.

Supply (Electric): Charges for customers who do not choose a competitive electric supplier are called Basic Generation Service (BGS). The charges include the energy as well as the generation and transmission facilities necessary to produce and transmit the energy.

TDD number for the hearing impaired 1 800 225-0072







Monthly Statement
AUGUST 2017
 Account number 42 007 763 08

AUG 23 2017
ACCOUNTS PAYABLE

For service at

54 ORANGE RD HILLSIDE
 MONTCLAIR TWP NJ
 07042-2110

1 855-BIZ-PSEG (249-7734)
Emergencies 24 hours/7days
 Business customer service
 7 AM - 5.30 PM Mon - Fri
 Closed on weekend and Holidays

Visit our website
www.pseg.com

Inquiries by mail
 PSE&G
 PO Box 14444
 New Brunswick NJ 08906-4444

Important Dates

Your payment for current charges is due September 05, 2017.

Your meter(s) are scheduled to be read on or about September 13.

To make a payment from a credit card Log In to **My Account** at pseg.com or call 1 888-575-6273

000073 000000217

 MONTCLAIR BD OF ED
 MONTCLAIR TWP OF
 22 VALLEY RD
 MONTCLAIR NJ 07042-2709

*8/28/17 \$41.03
 CK # 21409*

Account Summary

PSE&G balance from last bill	\$10,480.62
Payment received Jul 21 - Thank You!	-5,768.62
Current PSE&G - Gas charges for 1 meter	12.39
Meter Product Charges	2.00
Other PSE&G Charges and Credits - see pg. 3	-1,031.82
Total Amount Due	\$3,694.57

14.39

**** SHUT-OFF NOTICE ** 1-800-357-2262 (Mon-Fri, 7:30 AM - 8:00 PM)**
Your bill is now past due. Payment of \$3,666.18 must be received by 9/5/2017 or service may be shut off. A security deposit may be required if late payments continue. A statement of customer rights and fees is shown on the reverse side.

Si en el futuro usted desea recibir la notificación de desconexión de servicio en español, por favor llame al 1-800-357-2262.

Need help understanding your energy bill? Read the enclosed "Working For You" bill newsletter for a full summary of electric and gas rate schedules, and an explanation of itemized charges on your bill.

Summer can bring severe storms with possible power outages. If there is loss of power: keep refrigerator and freezer doors closed, use caution with candles, and turn off lights and appliances to avoid overloading circuits once power is restored.

Statement of Customer Rights

PSE&G IS SUBJECT TO THE JURISDICTION OF THE N.J. BOARD OF PUBLIC UTILITIES (BPU), 44 SOUTH CLINTON AVENUE, TRENTON, NJ 08625, 1-609-341-9188 OR TOLL FREE 1-800-624-0241. **HOWEVER, YOU SHOULD CONTACT PSE&G ON ANY BILLING OR SERVICE QUESTIONS BEFORE CALLING THE BPU. THE PSE&G PHONE NUMBER IS SHOWN ON THE FRONT OF THE BILL.**

IF YOU ARE UNABLE TO MAKE A PAYMENT, YOU MAY DISCUSS REASONABLE PAYMENT ARRANGEMENTS BY VISITING ONE OF OUR CUSTOMER SERVICE CENTERS OR BY CALLING OUR CREDIT AND COLLECTION CENTER AT 1-800-357-2262 BETWEEN THE HOURS OF 7:30 AM AND 8:00 PM (MON - FRI). IF YOU WISH TO CONTEST YOUR BILL, YOU MAY VISIT ONE OF OUR CUSTOMER SERVICE CENTERS OR CALL OUR CUSTOMER INQUIRY CENTER AT 1-800-436-7734, MON - FRI, 7:00 AM - 8:00 PM AND SAT, 7:00 AM - 5:00 PM.

YOU MAY HAVE COUNSEL OR THIRD PARTY REPRESENTATION WHEN APPEARING BEFORE PSE&G TO CONTEST A BONA FIDE DISPUTED CHARGE.

IF WITHIN FIVE DAYS A REQUEST IS MADE TO THE BPU FOR AN INVESTIGATION OF THE DISPUTED CHARGE, SERVICE WILL NOT BE DISCONTINUED BECAUSE OF NONPAYMENT OF BILLS PROVIDED ALL UNDISPUTED CHARGES ARE PAID.

YOU MAY CONTACT THE BPU TO REQUEST ASSISTANCE IN THE RESOLUTION OF A BONA FIDE DISPUTED CHARGE. YOU MAY ALSO REQUEST A FORMAL HEARING WITH THE BPU CONCERNING SUCH A DISPUTED CHARGE.

**** Additional Shut Off Information ** 1-800-357-2262 (Mon-Fri, 7:30 AM - 8:00 PM)**

A reconnection fee of \$45.00 will be charged for each service that is shut off. Service may not be restored on the same day payment is made. A fee of \$30.00 will be charged if a visit is made to collect past due bills. A late payment fee may be charged for past due bills. You can avoid a security deposit and poor credit rating by paying bills by their due date.



August 2017
 Account number 42 007 763 08
 Visit our website: www.pseg.com

PSE&G Gas

Usage	Meter 4225127
Actual reading Aug 15	0
Actual reading Jul 17	0
Conversion to CCF	x 1.0120
Total therms	0.000

Gas Deliveries	
Bill period deliveries	212.489
Imbalance*	212.489 -

*See text

Charges	PoD ID: PG000010894967845191	Rate - GSG
Delivery		
Service charge		\$12.39
Total Delivery		\$12.39
Total gas charges		\$12.39

A history of PSE&G's monthly Basic Gas Supply Service (BGSS) prices are located on our website at www.pseg.com.

* The Imbalance of 212.489- will be applied to your Gas Deliveries in the month of October. The amount and month applied may differ if you are switching third party suppliers or your account requires an adjustment.

Meter Products and Services

Meter	Description	Amount
E 0	Elec web (internet access)	\$2.00
Total		\$2.00

Other Charges And Credits

Fast Meter Credit	Aug 9, 2017	\$-1,031.82
Total other charges and credits		\$1,031.82 CR



Electronic Check Conversion

When you pay by check, you authorize PSE&G to use your check to make a one-time electronic fund transfer from your account. If you do not wish to participate, call 1-800-436-PSEG.

Electric & Gas Rate Information

For news about PSE&G's rate filing and upcoming public hearings visit www.pseg.com/pseandgfilings

Customer Service Centers

Open Monday through Friday, during the hours noted.

Bayonne, 608 Broadway	8am to 4:00pm
Burlington, 501 High Street	8am to 4:00pm
Camden, 1 Port Center	8am to 4:00pm
Elizabeth, 550 N. Broad Street	8am to 4:00pm
Hackensack, 214 Hudson Street	8am to 4:00pm
Hoboken, 615 Washington Street	8am to 4:00pm
Jersey City, 35 Journal Square (Corner of Bergen Ave. & Newkirk St.)	8am to 4:00pm
Newark, 80 Park Plaza	8am to 4:00pm
New Brunswick, 317 George St.	8am to 4:00pm
West Orange, 59 Main St.	8am to 4:00pm
Passaic, 651 Main Ave	8am to 4:00pm
Paterson, 301 Main St (30 Clark St)	8am to 4:00pm
Perth Amboy, 313 Madison Ave.	8am to 4:00pm
Plainfield, 120 West Seventh Street	8am to 4:00pm
Trenton, 28 West State Street	8am to 4:00pm
Union City, 4808 Bergenline Avenue	8am to 4:00pm

Bill Form Definitions

Service Charge: A fixed monthly charge related to metering, billing and account maintenance.

Distribution Charges (Gas): Charges related to delivering gas through pipes from supply sources to the customer. These charges include a therm component, and in November through March on certain rate schedules, also include a demand component.

Bill Form Definitions (continued)

Balancing Charge (Gas): This charge reflects storage related costs associated with winter gas use. This charge is only applicable in the billing months of November through March.

Demand (Gas): The highest average daily use of gas over the most recent billing months of November to March.

Supply (Gas): Charges for customers who do not choose a competitive gas supplier are called Basic Gas Supply Service (BGSS). The charges include the cost of the natural gas as well as the cost of interstate delivery of the gas to New Jersey.

Distribution Charges (Electric): Charges related to delivering electricity through wires from supply sources to the customer. These charges include both kilowatt-hour (kWh) and demand (kW) components.

Measured Demand (Electric): The maximum use of electricity at any time during a month or monthly time period (on or off-peak).

Annual Demand (Electric):

(For Rate HTS): The highest Measured Demand over the most recent 12 months.

(For Rates MD, ED, LPLS, LPLP): The highest Measured Demand in any time period in the current month.

Summer Demand (Electric): The Measured Demand (excluding off-peak) in each billing month of June through September.

Societal Benefits: This charge recovers the cost of government mandated programs designed to achieve public policy goals, such as energy conservation.

Securitization Transition: This charge recovers costs and associated taxes for transition bonds and for BGS transition bonds collected by PSE&G as servicer on behalf of PSE&G Transition Funding LLC and PSE&G Transition Funding II LLC, respectively.

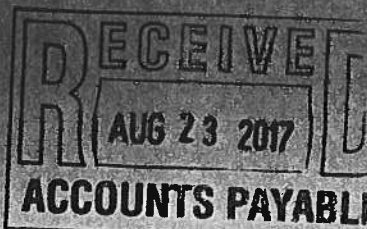
Supply Capacity (Electric): A customer's share of the generation and transmission facilities, measured in kilowatts (kW), which must be procured to serve the system annual peak usage. The customer's share is calculated from the customer's peak usage in the prior year's summer. For new customers without prior summer usage the share is calculated from connected load.

Supply (Electric): Charges for customers who do not choose a competitive electric supplier are called Basic Generation Service (BGS). The charges include the energy as well as the generation and transmission facilities necessary to produce and transmit the energy.

TDD number for the hearing impaired 1 800 225-0072



Monthly Statement
 AUGUST 2017
 Account number 42 007 763 08



For service at

54 ORANGE RD HILLSIDE
 MONTCLAIR TWP NJ
 07042-2110

1 855-BIZ-PSEG (249-7734)

Emergencies 24 hours/7days

Business customer service

7 AM - 5.30 PM Mon - Fri

Closed on weekend and Holidays

Visit our website

www.pseg.com

Inquiries by mail

PSE&G

PO Box 14444

New Brunswick NJ 08906-4444

Important Dates

Your payment for current charges is due September 05, 2017.

Your meter(s) are scheduled to be read on or about September 13.

To make a payment from a credit card Log In to **My Account** at pseg.com or call 1 888-575-6273

000071 000000218



MONTCLAIR BD OF ED
 MONTCLAIR TWP OF
 22 VALLEY RD
 MONTCLAIR NJ 07042-2709

E = 2,589.91

Account Summary

PSE&G balance from last bill *8/28/17 \$4,618.73 CK 21409* \$3,694.57

Current PSE&G - Electric charges for 1 meter 1,392.59

DIRECT ENERGY BUSINESS, LLC Electric Charges 1,197.32

Total Amount Due \$6,284.48

**** SHUT-OFF NOTICE ** 1-800-357-2262 (Mon-Fri, 7:30 AM - 8:00 PM)**

Your bill is now past due. Payment of \$3,666.18 must be received by 9/5/2017 or service may be shut off. A security deposit may be required if late payments continue. A statement of customer rights and fees is shown on the reverse side.

Si en el futuro usted desea recibir la notificación de desconexión de servicio en español, por favor llame al 1-800-357-2262.

Need help understanding your energy bill? Read the enclosed "Working For You" bill newsletter for a full summary of electric and gas rate schedules, and an explanation of itemized charges on your bill.

Summer can bring severe storms with possible power outages. If there is loss of power: keep refrigerator and freezer doors closed, use caution with candles, and turn off lights and appliances to avoid overloading circuits once power is restored.

Statement of Customer Rights

PSE&G IS SUBJECT TO THE JURISDICTION OF THE N.J. BOARD OF PUBLIC UTILITIES (BPU), 44 SOUTH CLINTON AVENUE, TRENTON, NJ 08625, 1-609-341-9188 OR TOLL FREE 1-800-624-0241. **HOWEVER, YOU SHOULD CONTACT PSE&G ON ANY BILLING OR SERVICE QUESTIONS BEFORE CALLING THE BPU. THE PSE&G PHONE NUMBER IS SHOWN ON THE FRONT OF THE BILL.**

IF YOU ARE UNABLE TO MAKE A PAYMENT, YOU MAY DISCUSS REASONABLE PAYMENT ARRANGEMENTS BY VISITING ONE OF OUR CUSTOMER SERVICE CENTERS OR BY CALLING OUR CREDIT AND COLLECTION CENTER AT 1-800-357-2262 BETWEEN THE HOURS OF 7:30 AM AND 8:00 PM (MON - FRI). IF YOU WISH TO CONTEST YOUR BILL, YOU MAY VISIT ONE OF OUR CUSTOMER SERVICE CENTERS OR CALL OUR CUSTOMER INQUIRY CENTER AT 1-800-436-7734, MON - FRI, 7:00 AM - 8:00 PM AND SAT, 7:00 AM - 5:00 PM.

YOU MAY HAVE COUNSEL OR THIRD PARTY REPRESENTATION WHEN APPEARING BEFORE PSE&G TO CONTEST A BONA FIDE DISPUTED CHARGE.

IF WITHIN FIVE DAYS A REQUEST IS MADE TO THE BPU FOR AN INVESTIGATION OF THE DISPUTED CHARGE, SERVICE WILL NOT BE DISCONTINUED BECAUSE OF NONPAYMENT OF BILLS PROVIDED ALL UNDISPUTED CHARGES ARE PAID.

YOU MAY CONTACT THE BPU TO REQUEST ASSISTANCE IN THE RESOLUTION OF A BONA FIDE DISPUTED CHARGE. YOU MAY ALSO REQUEST A FORMAL HEARING WITH THE BPU CONCERNING SUCH A DISPUTED CHARGE.

**** Additional Shut Off Information ** 1-800-357-2262 (Mon-Fri, 7:30 AM - 8:00 PM)**

A reconnection fee of \$45.00 will be charged for each service that is shut off. Service may not be restored on the same day payment is made. A fee of \$30.00 will be charged if a visit is made to collect past due bills. A late payment fee may be charged for past due bills. You can avoid a security deposit and poor credit rating by paying bills by their due date.



PSE&G Electric

Usage	Meter 9213599
Reading Aug 14	
On-Peak actual	6664
Off-Peak1	
Off-Peak2	
Reading Jul 15	
On-Peak actual	6545
Off-Peak1	
Off-Peak2	
Multiplier	120
Total On kWh	8,242
Total Off kWh	6,048
Total kWh	14,290
Distribution Demands	
Annual Demand kW	70.30
Summer Demand kW	70.30
Measured Demands	
On-Peak kW	70.30
Off-Peak2 kW	52.50
Constant	120
Supply Capacity	
Generation kW	35.20
Transmission kW	28.48

Charges	PoD ID: PE000010894968645191	Rate - LPLS
Delivery		
Service charge		\$371.68
Distribution charges		
Annual Demand	70.30 kW @ \$3.766998578	264.82
Summer Demand	70.30 kW @ \$8.961735420	630.01
kWh - On-peak	8242 kWh @ \$0.000953652	7.86
kWh - Off-peak	6048 kWh @ \$0.000954034	5.77
Societal Benefits	14290 kWh @ \$0.007869139	112.45
Sub-Total Delivery		\$1,392.59

Total electric charges \$1,392.59

**You are currently purchasing your electric supply from another supplier. If you had been purchasing your electric supply from PSE&G, you would have been billed \$1,311.91 for this supply. This is your Price to Compare, which varies each month depending upon your usage pattern.*

DIRECT ENERGY BUSINESS, LLC

Through the CHOICE Program, you have chosen to purchase electricity from DIRECT ENERGY BUSINESS, LLC. If you have any questions, please contact them directly at 888-925-9115.

Adjustments	0.00
Current charges	1,197.32
Total DIRECT ENERGY BUSINESS, LLC Charges	\$1,197.32

Fixed Price - 14,289.534 Kwh Total @ \$0.08379/Kwh



Electronic Check Conversion

When you pay by check, you authorize PSE&G to use your check to make a one-time electronic fund transfer from your account. If you do not wish to participate, call 1-800-436-PSEG.

Electric & Gas Rate Information

For news about PSE&G's rate filing and upcoming public hearings visit www.pseg.com/pseandgfilings

Customer Service Centers

Open Monday through Friday, during the hours noted.

Bayonne, 608 Broadway	8am to 4:00pm
Burlington, 501 High Street	8am to 4:00pm
Camden, 1 Port Center	8am to 4:00pm
Elizabeth, 550 N. Broad Street	8am to 4:00pm
Hackensack, 214 Hudson Street	8am to 4:00pm
Hoboken, 615 Washington Street	8am to 4:00pm
Jersey City, 35 Journal Square (Corner of Bergen Ave. & Newkirk St.)	8am to 4:00pm
Newark, 80 Park Plaza	8am to 4:00pm
New Brunswick, 317 George St.	8am to 4:00pm
West Orange, 59 Main St.	8am to 4:00pm
Passaic, 651 Main Ave	8am to 4:00pm
Paterson, 301 Main St (30 Clark St)	8am to 4:00pm
Perth Amboy, 313 Madison Ave.	8am to 4:00pm
Plainfield, 120 West Seventh Street	8am to 4:00pm
Trenton, 28 West State Street	8am to 4:00pm
Union City, 4808 Bergenline Avenue	8am to 4:00pm

Bill Form Definitions

Service Charge: A fixed monthly charge related to metering, billing and account maintenance.

Distribution Charges (Gas): Charges related to delivering gas through pipes from supply sources to the customer. These charges include a therm component, and in November through March on certain rate schedules, also include a demand component.

Bill Form Definitions (continued)

Balancing Charge (Gas): This charge reflects storage related costs associated with winter gas use. This charge is only applicable in the billing months of November through March.

Demand (Gas): The highest average daily use of gas over the most recent billing months of November to March.

Supply (Gas): Charges for customers who do not choose a competitive gas supplier are called Basic Gas Supply Service (BGSS). The charges include the cost of the natural gas as well as the cost of interstate delivery of the gas to New Jersey.

Distribution Charges (Electric): Charges related to delivering electricity through wires from supply sources to the customer. These charges include both kilowatt-hour (kWh) and demand (kW) components.

Measured Demand (Electric): The maximum use of electricity at any time during a month or monthly time period (on or off-peak).

Annual Demand (Electric):

(For Rate HTS): The highest Measured Demand over the most recent 12 months.

(For Rates MD, ED, LPLS, LPLP): The highest Measured Demand in any time period in the current month.

Summer Demand (Electric): The Measured Demand (excluding off-peak) in each billing month of June through September.

Societal Benefits: This charge recovers the cost of government mandated programs designed to achieve public policy goals, such as energy conservation.

Securitization Transition: This charge recovers costs and associated taxes for transition bonds and for BGS transition bonds collected by PSE&G as servicer on behalf of PSE&G Transition Funding LLC and PSE&G Transition Funding II LLC, respectively.

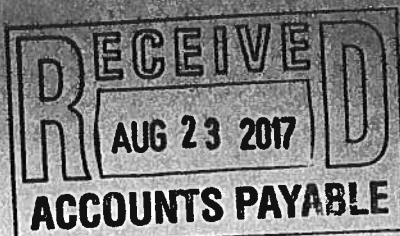
Supply Capacity (Electric): A customer's share of the generation and transmission facilities, measured in kilowatts (kW), which must be procured to serve the system annual peak usage. The customer's share is calculated from the customer's peak usage in the prior year's summer. For new customers without prior summer usage the share is calculated from connected load.

Supply (Electric): Charges for customers who do not choose a competitive electric supplier are called Basic Generation Service (BGS). The charges include the energy as well as the generation and transmission facilities necessary to produce and transmit the energy.

TDD number for the hearing impaired 1 800 225-0072



Monthly Statement
AUGUST 2017
 Account number 42 007 764 05

**For service at**

MT HEBRON RD BRADFORD
 MONTCLAIR TWP NJ
 07042

1 855-BIZ-PSEG (249-7734)

Emergencies 24 hours/7days

Business customer service

7 AM - 5.30 PM Mon - Fri

Closed on weekend and Holidays

Visit our website

www.pseg.com

Inquiries by mail

PSEG

PO Box 14444

New Brunswick NJ 08906-4444

Important Dates

Your payment for current charges
 is due September 05, 2017.

Your meter(s) are scheduled to be
 read on or about September 13.

To make a payment from a credit
 card Log In to **My Account** at
 pseg.com or call 1 888-575-6273

000068 000000219



MONTCLAIR BD OF ED
 MONTCLAIR TWP OF
 22 VALLEY RD
 MONTCLAIR NJ 07042-2709

E = 4,112.22

Account Summary

PSE&G balance from last bill	<i>Pd 8/28/17 \$5,182.68 Cr + 21409</i>	\$10,836.64
Payment received Jul 21 - Thank You!		-5,706.20
Current PSE&G - Gas charges for 1 meter		117.96
Current PSE&G - Electric charges for 1 meter		2,107.48
Meter Product Charges		2.00
DIRECT ENERGY BUSINESS, LLC Electric Charges		2,002.74
Total Amount Due		\$9,360.62

**** SHUT-OFF NOTICE ** 1-800-357-2262 (Mon-Fri, 7:30 AM - 8:00 PM)**

Your bill is now past due. Payment of \$5,126.44 must be received by 9/5/2017 or service may be shut off. A security deposit may be required if late payments continue. A statement of customer rights and fees is shown on the reverse side.

Si en el futuro usted desea recibir la notificación de desconexión de servicio en español, por favor llame al 1-800-357-2262.

Need help understanding your energy bill? Read the enclosed "Working For You" bill newsletter for a full summary of electric and gas rate schedules, and an explanation of itemized charges on your bill.

Statement of Customer Rights

PSE&G IS SUBJECT TO THE JURISDICTION OF THE N.J. BOARD OF PUBLIC UTILITIES (BPU), 44 SOUTH CLINTON AVENUE, TRENTON, NJ 08625, 1-609-341-9188 OR TOLL FREE 1-800-624-0241. **HOWEVER, YOU SHOULD CONTACT PSE&G ON ANY BILLING OR SERVICE QUESTIONS BEFORE CALLING THE BPU. THE PSE&G PHONE NUMBER IS SHOWN ON THE FRONT OF THE BILL.**

IF YOU ARE UNABLE TO MAKE A PAYMENT, YOU MAY DISCUSS REASONABLE PAYMENT ARRANGEMENTS BY VISITING ONE OF OUR CUSTOMER SERVICE CENTERS OR BY CALLING OUR CREDIT AND COLLECTION CENTER AT 1-800-357-2262 BETWEEN THE HOURS OF 7:30 AM AND 8:00 PM (MON - FRI). IF YOU WISH TO CONTEST YOUR BILL, YOU MAY VISIT ONE OF OUR CUSTOMER SERVICE CENTERS OR CALL OUR CUSTOMER INQUIRY CENTER AT 1-800-436-7734, MON - FRI, 7:00 AM - 8:00 PM AND SAT, 7:00 AM - 5:00 PM.

YOU MAY HAVE COUNSEL OR THIRD PARTY REPRESENTATION WHEN APPEARING BEFORE PSE&G TO CONTEST A BONA FIDE DISPUTED CHARGE.

IF WITHIN FIVE DAYS A REQUEST IS MADE TO THE BPU FOR AN INVESTIGATION OF THE DISPUTED CHARGE, SERVICE WILL NOT BE DISCONTINUED BECAUSE OF NONPAYMENT OF BILLS PROVIDED ALL UNDISPUTED CHARGES ARE PAID.

YOU MAY CONTACT THE BPU TO REQUEST ASSISTANCE IN THE RESOLUTION OF A BONA FIDE DISPUTED CHARGE. YOU MAY ALSO REQUEST A FORMAL HEARING WITH THE BPU CONCERNING SUCH A DISPUTED CHARGE.

**** Additional Shut Off Information ** 1-800-357-2262 (Mon-Fri, 7:30 AM - 8:00 PM)**

A reconnection fee of \$45.00 will be charged for each service that is shut off. Service may not be restored on the same day payment is made. A fee of \$30.00 will be charged if a visit is made to collect past due bills. A late payment fee may be charged for past due bills. You can avoid a security deposit and poor credit rating by paying bills by their due date.



PSE&G Gas

Usage	Meter 2283375
Actual reading Aug 15	12472
Actual reading Jul 17	12363
Conversion to CCF	x 1.0339
CCF total	112.695
Conversion to therms	x 1.03200
Total therms	116.301

Gas Deliveries	
Bill period deliveries	101.685
Imbalance*	14.616 +

*See text

Charges PoD ID: PG000010894971045191 Rate - LVG

Delivery		
Service charge		\$107.00
Distribution charge	116.301 therms @ \$0.0472051	5.49
Societal Benefits	116.301 therms @ \$0.04703310	5.47
Total Delivery		\$117.96

Total gas charges \$117.96

A history of PSE&G's monthly Basic Gas Supply Service (BGSS) prices are located on our website at www.pseg.com.

* The imbalance of 14.616+ will be applied to your Gas Deliveries in the month of October. The amount and month applied may differ if you are switching third party suppliers or your account requires an adjustment.

PSE&G Electric

Usage	Meter 9213517
Reading Aug 14	
On-Peak actual	7084
Off-Peak1	
Off-Peak2	
Reading Jul 15	
On-Peak actual	6884
Off-Peak1	
Off-Peak2	
Multiplier	120
Total On kWh	14,189
Total Off kWh	9,713
Total kWh	23,902

Distribution Demands	
Annual Demand kW	119.80
Summer Demand kW	119.80

Measured Demands	
On-Peak kW	119.80
Off-Peak2 kW	93.40
Constant	120

Supply Capacity	
Generation kW	64.24
Transmission kW	36.31

Charges PoD ID: PE000010894972845191 Rate - LPLS

Delivery		
Service charge		\$371.68
Distribution charges		
Annual Demand	119.80 kW @ \$3.767028381	451.29
Summer Demand	119.80 kW @ \$8.961769616	1,073.62
kWh - On-peak	14189 kWh @ \$0.000954260	13.54
kWh - Off-peak	9713 kWh @ \$0.000954391	9.27
Societal Benefits	23902 kWh @ \$0.007868798	188.08
Sub-Total Delivery		\$2,107.48

Total electric charges \$2,107.48

*You are currently purchasing your electric supply from another supplier. If you had been purchasing your electric supply from PSE&G, you would have been billed \$2,154.44 for this supply. This is your Price to Compare, which varies each month depending upon your usage pattern.



Meter Products and Services

Meter	Description	Amount
E 9213517	Elec web (internet access)	\$2.00
Total		\$2.00

DIRECT ENERGY BUSINESS, LLC

Through the CHOICE Program, you have chosen to purchase electricity from DIRECT ENERGY BUSINESS, LLC. If you have any questions, please contact them directly at 888-925-9115.

Adjustments	0.00
Current charges	2,002.74
Total DIRECT ENERGY BUSINESS, LLC Charges	\$2,002.74

Fixed Price - 23,901.912 Kwh Total @ \$0.08379/Kwh

Electronic Check Conversion

When you pay by check, you authorize PSE&G to use your check to make a one-time electronic fund transfer from your account. If you do not wish to participate, call 1-800-436-PSEG.

Electric & Gas Rate Information

For news about PSE&G's rate filing and upcoming public hearings visit www.pseg.com/pseandgfilings

Customer Service Centers

Open Monday through Friday, during the hours noted.

Bayonne, 608 Broadway	8am to 4:00pm
Burlington, 501 High Street	8am to 4:00pm
Camden, 1 Port Center	8am to 4:00pm
Elizabeth, 550 N. Broad Street	8am to 4:00pm
Hackensack, 214 Hudson Street	8am to 4:00pm
Hoboken, 615 Washington Street	8am to 4:00pm
Jersey City, 35 Journal Square (Corner of Bergen Ave. & Newkirk St.)	8am to 4:00pm
Newark, 80 Park Plaza	8am to 4:00pm
New Brunswick, 317 George St.	8am to 4:00pm
West Orange, 59 Main St.	8am to 4:00pm
Passaic, 651 Main Ave	8am to 4:00pm
Paterson, 301 Main St (30 Clark St)	8am to 4:00pm
Perth Amboy, 313 Madison Ave.	8am to 4:00pm
Plainfield, 120 West Seventh Street	8am to 4:00pm
Trenton, 28 West State Street	8am to 4:00pm
Union City, 4808 Bergenline Avenue	8am to 4:00pm

Bill Form Definitions

Service Charge: A fixed monthly charge related to metering, billing and account maintenance.

Distribution Charges (Gas): Charges related to delivering gas through pipes from supply sources to the customer. These charges include a therm component, and in November through March on certain rate schedules, also include a demand component.

Bill Form Definitions (continued)

Balancing Charge (Gas): This charge reflects storage related costs associated with winter gas use. This charge is only applicable in the billing months of November through March.

Demand (Gas): The highest average daily use of gas over the most recent billing months of November to March.

Supply (Gas): Charges for customers who do not choose a competitive gas supplier are called Basic Gas Supply Service (BGSS). The charges include the cost of the natural gas as well as the cost of interstate delivery of the gas to New Jersey.

Distribution Charges (Electric): Charges related to delivering electricity through wires from supply sources to the customer. These charges include both kilowatt-hour (kWh) and demand (kW) components.

Measured Demand (Electric): The maximum use of electricity at any time during a month or monthly time period (on or off-peak).

Annual Demand (Electric):

(For Rate HTS): The highest Measured Demand over the most recent 12 months.

(For Rates MD, ED, LPLS, LPLP): The highest Measured Demand in any time period in the current month.

Summer Demand (Electric): The Measured Demand (excluding off-peak) in each billing month of June through September.

Societal Benefits: This charge recovers the cost of government mandated programs designed to achieve public policy goals, such as energy conservation.

Securitization Transition: This charge recovers costs and associated taxes for transition bonds and for BGS transition bonds collected by PSE&G as servicer on behalf of PSE&G Transition Funding LLC and PSE&G Transition Funding II LLC, respectively.

Supply Capacity (Electric): A customer's share of the generation and transmission facilities, measured in kilowatts (kW), which must be procured to serve the system annual peak usage. The customer's share is calculated from the customer's peak usage in the prior year's summer. For new customers without prior summer usage the share is calculated from connected load.

Supply (Electric): Charges for customers who do not choose a competitive electric supplier are called Basic Generation Service (BGS). The charges include the energy as well as the generation and transmission facilities necessary to produce and transmit the energy.

TDD number for the hearing impaired 1 800 225-0072



